

**1. GENERAL:**

- 1.1 THESE NOTES SHALL BE READ IN CONJUNCTION WITH ALL RELEVANT DRAWING OF THE ENGINEER AND ALL APPLICABLE PROJECT AND STANDARDIZED SPECIFICATIONS MENTIONED BELOW. IN THE EVENT OF ANY DISCREPANCY BETWEEN THESE NOTES AND THE SPECIFICATIONS THESE NOTES SHALL TAKE PRECEDENCE AND SHALL GOVERN. THE ENGINEERS' DRAWINGS SHALL BE READ IN CONJUNCTION WITH ALL RELEVANT ARCHITECTS, CONSULTANTS AND SPECIALISTS DRAWINGS. DISCREPANCIES SHALL BE REFERRED TO THE ENGINEER PRIOR TO CONSTRUCTION.
- 1.2 JOINTS INDICATED IN SURFACE BEDS, SLABS AND BEAMS ARE ALSO TO BE CONSTRUCTED IN BRICK WALLS, SCREEDS AND FINISHES.
- 1.3 THE CONTRACTOR MUST ENSURE THAT ALL EMBEDDED ITEMS AND PENETRATIONS FOR SERVICES HAVE BEEN PROVIDED FOR AND POSITIONED, ACCORDING TO THE LATEST DRAWINGS OF ALL DISCIPLINES BEFORE CASTING CONCRETE.
- 1.4 ALL CONCRETE MIX DESIGNS, FORMWORK, STRIPPING TIMES AND CURING PROCEDURES TO BE APPROVED BY THE ENGINEER BEFORE COMMENCING WITH CONSTRUCTION OF ANY CONCRETE WORK.
- 1.5 DESIGN BEARING CAPACITY OF COMPETENT IN-SITU MATERIAL = 150 kPa (TO BE CONFIRMED BY GEOTECHNICAL REPORT), BEARING PRESSURE BELOW ALL RC FOUNDATIONS TO BE CONFIRMED WITH 2x DCP TESTS PER FOOTING (OR AT 2m c/c BOTH WAYS FOR STRIP FOOTINGS & LIFT SHAFT FOOTINGS). SEE ALSO GEOTECHNICAL REPORT.
- 1.6 WHERE ABOVE BEARING CAPACITY IS NOT ACHIEVED, EXCAVATION IS TO PROCEED DEPTH OF COMPOTENT MATERIAL AND BACKFILLED WITH SOILCRETE/MASS CONCRETE TO SOFFIT OF FOOTING AND TO BE APPROVED BY GEOTECHNICAL ENGINEER.
- 1.7 NO UNDERGROUND SERVICES WILL BE PERMITTED DIRECTLY BELOW COLUMN BASES. SERVICES IN THE ZONE 90° TO 45° TO THE HORIZONTAL MEASURED FROM THE TOE OF THE COLUMN BASES, AS WELL AS THE SERVICES BELOW WALL STRIP FOOTINGS, SHALL BE ENCASED IN WALL STRIP FOOTINGS.
- 1.8 REFER TO ARCHITECT DRAWINGS FOR WATERPROOFING DETAILS.
- 1.9 REFER TO ARCHITECT, ELECTRICAL - AND MECHANICAL ENGINEERS DRAWINGS TO VERIFY POSITIONS OF DOWNPIPES, DUCT PENETRATIONS, FULLBORE OUTLETS, RECESSES, ETC. AS REQUIRED BY THEM PRIOR TO CASTING OF CONCRETE. ONLY OPENINGS WITH ANY DIMENSION EXCEEDING 250mm INDICATED ON ENGINEER'S DRAWINGS.
- 1.10 RETAINING WALLS WITH CONCRETE SLABS OVER: BACKFILLING TO BE DONE ONLY 4 DAYS AFTER CASTING OF SLAB.

**2. CONCRETE:**

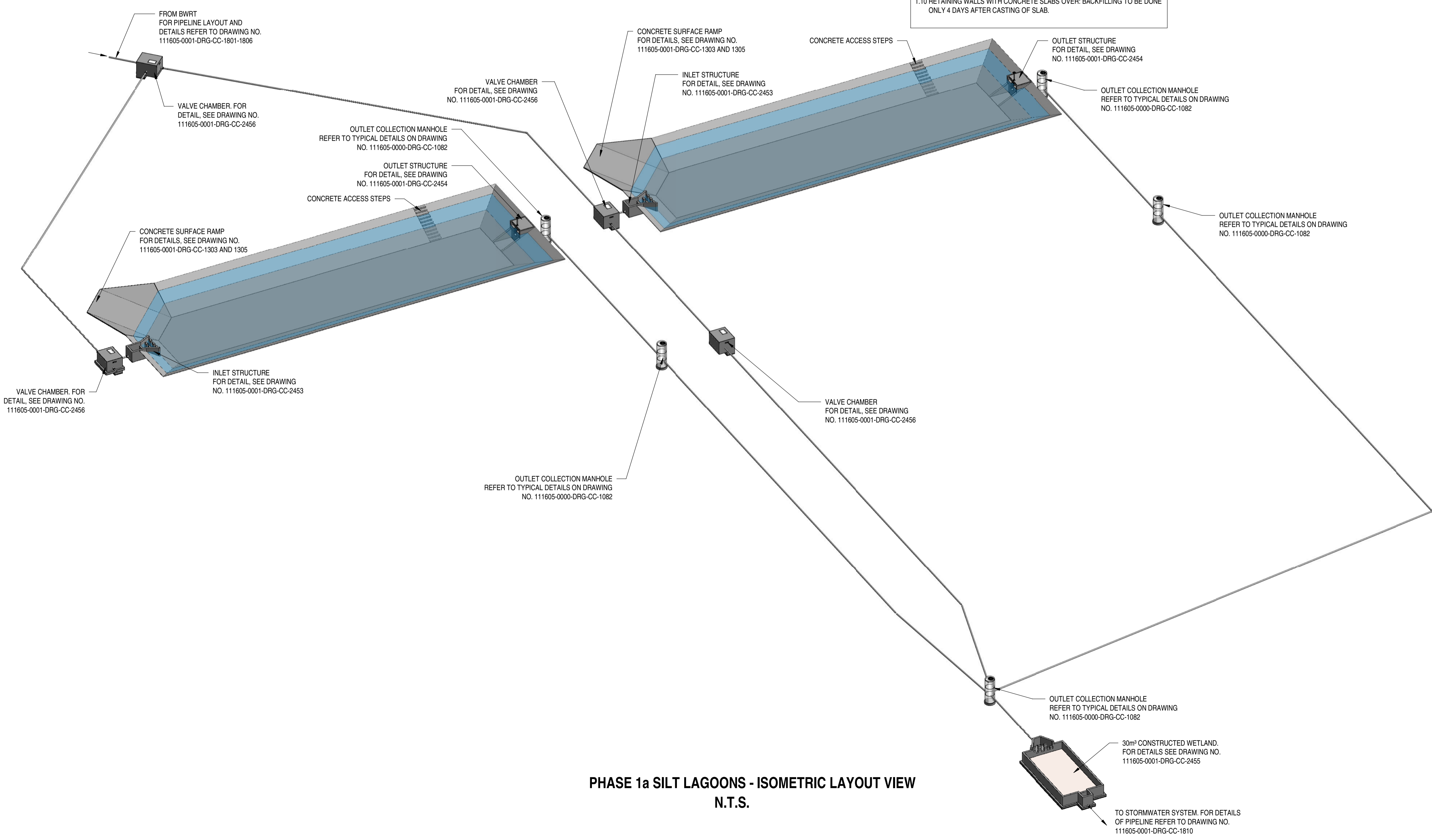
- 2.1 ALL CONCRETE SHALL CONFORM TO THE ZUTARI SPECIFICATION.
- 2.2 ALL CONCRETE SHALL BE CURED FOR 7 DAYS BY AN APPROVED METHOD - TO BE SUBMITTED TO ENGINEER.
- 2.3 CONCRETE GRADE: 35 MPA FOR ALL STRUCTURAL CONCRETE. 15 MPA FOR BLINDING.
- 2.4 WHEN READY MIXED CONCRETE IS USED, TEST CUBES ARE TO BE TAKEN ON SITE WHILEST CASTING.
- 2.5 50mm CONCRETE COVER FOR SOIL & WATER CONTACT AREAS 30mm CONCRETE COVER FOR AIR CONTACT AREAS
- 2.6 REINFORCEMENT SHALL BE INSPECTED BY THE ENGINEER ONLY AFTER IT HAS BEEN COMPLETELY FIXED IN POSITION, FORMWORK IS CLEAN, SPACERS ARE PLACED IN POSITION, AND AFTER THE CONTRACTOR HAS INSPECTED IT HIMSELF AND ALL QA DOCUMENTATION HAS BEEN SIGNED OFF. THE ENGINEER SHALL BE GIVEN 24 HOURS ADVANCE NOTICE OF AN INSPECTION APPROVED BY THE ENGINEER IN WRITING.
- 2.7 WELDING OF REINFORCEMENT IS NOT ALLOWED UNLESS IT HAS BEEN APPROVED BY THE ENGINEER IN WRITING.
- 2.8 CONSTRUCTION JOINTS IN SLABS/BEAMS: THE POSITION OF ALL CONSTRUCTION JOINTS TO BE APPROVED BY THE ENGINEER IN WRITING. BEFORE COMMENCING TO CAST NEW CONCRETE (AS INDICATED BY 2) THE SURFACE OF THE OLD CONCRETE (INDICATED BY 1) SHALL BE CLEANED AND CHIPPED TO EXPOSE THE AGGREGATE AND SHALL BE KEPT WET FOR 2 HOURS BEFORE CASTING. THE OLD CONCRETE MUST BE SLUSHED WITH CEMENT BEFORE CASTING.
- 2.9 75mm BLINDING LAYER IS TO BE PROVIDED UNDER ALL BASES UNLESS INDICATED OTHERWISE (CLASS 15/19 CONCRETE).
- 2.10 JOINTS INDICATED IN SURFACE BEDS, SLABS AND BEAMS ARE ALSO TO BE CONSTRUCTED IN BRICK WALLS, SCREEDS AND FINISHES.
- 2.11 ALL OPEN CONCRETE CORNERS TO BE CHAMFERED
- 2.12 SMOOTH FORMED SURFACE FINISH TO ALL CONCRETE

**REFERENCE DRAWINGS:**

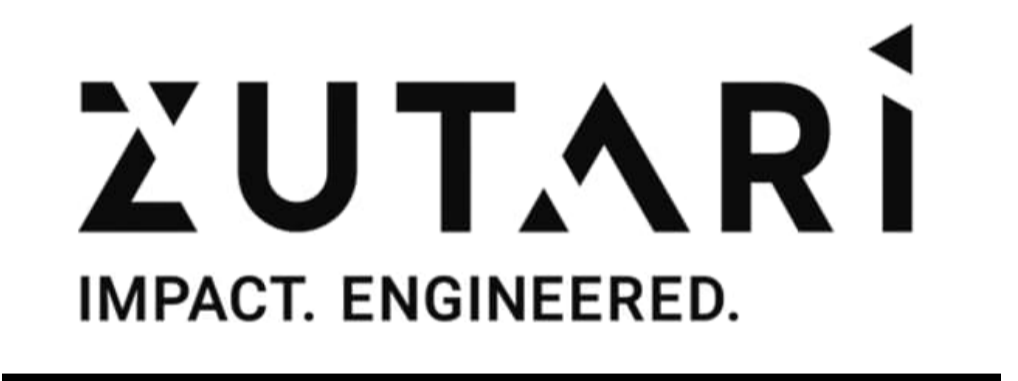
- FOR BUILDING CONNECTION AND STANDPIPE DETAIL REFER TO DRG NO. 111605-0000-DRG-CC-1051
- FOR SUBSURFACE DRAIN DETAILS REFER TO DRG NO. 111605-0000-DRG-CC-1081 to 1082
- FOR STAIR NOSING DETAILS REFER TO DRG NO. 111605-0000-DRG-CC-1121
- FOR STEEL LADDER DETAILS REFER TO DRG NO. 111605-0000-DRG-CC-1122
- FOR CONCRETE JOINTS DETAILS REFER TO DRG NO. 111605-0000-DRG-CC-1200
- FOR BUILDING DETAILS REFER TO DRG NO. 111605-0000-DRG-CC-1201
- FOR CAST IN PIPE, DOWNPIPE, TRENCH AND GRATING DETAILS REFER TO DRG NO. 111605-0000-DRG-CC-1202
- FOR HANDRAILING DETAIL REFER TO DRG NO. 111605-0000-DRG-CC-1123
- FOR WINDOW & DOOR SCHEDULE REFER TO DRG NO. 111605-0002-DRG-CC-3300 to 3301
- FOR SANITARY SCHEDULE DETAIL REFER TO DRG NO. 111605-0002-DRG-CC-3400

**DRAWINGS IN SET:**

- 111605-0001-DRG-CC-2450 - SILT LAGOONS ISOMETRIC VIEWS
- 111605-0001-DRG-CC-2451 - SILT LAGOONS GENERAL ARRANGEMENT
- 111605-0001-DRG-CC-2452 - SILT LAGOONS TYPICAL PLAN AND SECTION
- 111605-0001-DRG-CC-2453 - SILT LAGOONS INLET STRUCTURAL PLAN AND SECTIONS
- 111605-0001-DRG-CC-2454 - SILT LAGOONS OUTLET STRUCTURAL PLAN AND SECTIONS
- 111605-0001-DRG-CC-2455 - SILT LAGOONS CONSTRUCTION WETLAND PLAN AND SECTION
- 111605-0001-DRG-CC-2456 - SILT LAGOONS VALVE CHAMBER PLAN AND SECTIONS



**PHASE 1a SILT LAGOONS - ISOMETRIC LAYOUT VIEW  
N.T.S.**



CLIENT



REV	DATE	REVISION DETAILS	APPROVED
TO	26/05/23	ISSUED FOR TENDER	G Du TOIT

SCALE AS SHOWN	SIZE A1	FOR TENDER NOT FOR CONSTRUCTION
DRAWN M. HSU	APPROVED	
DESIGNED F. SMUTS	CHECKED	DATE
CHECKED G. Du TOIT		G. Du TOIT

**PROJECT**  
OMM PROGRAMME BULK WATER  
STUDY PHASE - MOKOPANE WTW

**TITLE**  
SILT LAGOON  
ISOMETRIC VIEW

DRAWING NUMBER					
PROJECT No	WBS	TYPE	DISC	NUMBER	REV
111605	0001	DRG	CC	2450	- TO