



## PALAEONTOLOGICAL DESKTOP ASSESSMENT

OLIFANTS MANAGEMENT MODEL  
PROGRAMME BULK RAW WATER  
STUDY PHASE (OMMP-BRWSP) –  
SEKURUWE WATER TREATMENT  
WORKS NEAR SEKURUWE, IN THE  
LIMPOPO PROVINCE

COMPILED FOR PGS HERITAGE



## Declaration of Independence

I, Elize Butler, declare that –

General declaration:

- I act as the independent palaeontological specialist in this application
- I will perform the work relating to the application in an objective manner, even if this results in views and findings that are not favorable to the applicant
- I declare that there are no circumstances that may compromise my objectivity in performing such work;
- I have expertise in conducting palaeontological impact assessments, including knowledge of the Act, Regulations and any guidelines that have relevance to the proposed activity;
- I will comply with the Act, Regulations and all other applicable legislation;
- I will take into account, to the extent possible, the matters listed in section 38 of the NHRA when preparing the application and any report relating to the application;
- I have no, and will not engage in, conflicting interests in the undertaking of the activity;
- I undertake to disclose to the applicant and the competent authority all material information in my possession that reasonably has or may have the potential of influencing - any decision to be taken with respect to the application by the competent authority; and - the objectivity of any report, plan or document to be prepared by myself for submission to the competent authority;
- I will ensure that information containing all relevant facts in respect of the application is distributed or made available to interested and affected parties and the public and that participation by interested and affected parties is facilitated in such a manner that all interested and affected parties will be provided with a reasonable opportunity to participate and to provide comments on documents that are produced to support the application;
- I will provide the competent authority with access to all information at my disposal regarding the application, whether such information is favorable to the applicant or not
- All the particulars furnished by me in this form are true and correct;
- I will perform all other obligations as expected a palaeontological specialist in terms of the Act and the constitutions of my affiliated professional bodies; and



- I realize that a false declaration is an offense in terms of regulation 71 of the Regulations and is punishable in terms of section 24F of the NEMA.

**Disclosure of Vested Interest**

I do not have and will not have any vested interest (either business, financial, personal or other) in the proposed activity proceeding other than remuneration for work performed in terms of the Regulations.

**PALAEONTOLOGICAL CONSULTANT:**

Banzai Environmental (Pty) Ltd

**CONTACT PERSON:**

Elize Butler

Tel: +27 844478759

Email: elizebutler002@gmail.com

**SIGNATURE:**



The heritage impact assessment report has been compiled considering the National Environmental Management Act 1998 (NEMA) and Environmental Impact Regulations 2014 as amended, requirements for specialist reports, Appendix 6, as indicated in the table below.

**Table 1: Checklist for Specialist studies conformance with Appendix 6 of the EIA Regulations of 2014 (as amended)**

Requirements of Appendix 6 – GN R326 EIA Regulations of 7 April 2017	The relevant section in the report	Comment where not applicable.
1.(1) (a) (i) Details of the specialist who prepared the report	Page ii and Section 2 of Report – Contact details and company and Appendix B	-
(ii) The expertise of that person to compile a specialist report including a curriculum vita	Section 2 – refer to Appendix B	-
(b) A declaration that the person is independent in a form as may be specified by the competent authority	Page ii of the report	-
(c) An indication of the scope of, and the purpose for which, the report was prepared	Section 4 – Methods and TOR	-
(cA) An indication of the quality and age of base data used for the specialist report	Section 5 – Geological and Palaeontological history	-



Requirements of Appendix 6 – GN R326 EIA Regulations of 7 April 2017	The relevant section in the report	Comment where not applicable.
(cB) a description of existing impacts on the site, cumulative impacts of the proposed development and levels of acceptable change;	Section 7	-
(d) The duration, date and season of the site investigation and the relevance of the season to the outcome of the assessment		Desktop Assessment
(e) a description of the methodology adopted in preparing the report or carrying out the specialised process inclusive of equipment and modelling used	Section 4- Approach and Methodology	-
(f) details of an assessment of the specifically identified sensitivity of the site related to the proposed activity or activities and its associated structures and infrastructure, inclusive of a site plan identifying site alternatives;	Section 1 & 8	
(g) An identification of any areas to be avoided, including buffers	Section 1 & 8	
(h) A map superimposing the activity including the associated structures and infrastructure on the environmental sensitivities of the site including areas to be avoided, including buffers;	Section 5 – Geological and Palaeontological history	
(i) A description of any assumptions made and any uncertainties or gaps in knowledge;	Section 4.1 – Assumptions and Limitation	-
(j) A description of the findings and potential implications of such findings on the impact of the	Section 1 and 8	



Requirements of Appendix 6 – GN R326 EIA Regulations of 7 April 2017	The relevant section in the report	Comment where not applicable.
proposed activity, including identified alternatives, on the environment		
(k) Any mitigation measures for inclusion in the EMPr	Section 1 and 8	
(l) Any conditions for inclusion in the environmental authorisation	Section 1 and 8	
(m) Any monitoring requirements for inclusion in the EMPr or environmental authorisation	Section 1 and 8	
(n)(i) A reasoned opinion as to whether the proposed activity, activities or portions thereof should be authorised and	Section 1 and 8	
(n)(iA) A reasoned opinion regarding the acceptability of the proposed activity or activities; and		
(n)(ii) If the opinion is that the proposed activity, activities or portions thereof should be authorised, any avoidance, management and mitigation measures that should be included in the EMPr, and where applicable, the closure plan	Section 1 and 8	-
(o) A description of any consultation process that was undertaken during the course of carrying out the study	N/A	Not applicable. A public consultation process was handled as part of the Environmental Impact



Requirements of Appendix 6 – GN R326 EIA Regulations of 7 April 2017	The relevant section in the report	Comment where not applicable.
		Assessment (EIA) and Environmental Management Plan (EMP) process.
(p) A summary and copies of any comments that were received during any consultation process	N/A	Not applicable. To date, no comments regarding heritage resources that require input from a specialist have been raised.
(q) Any other information requested by the competent authority.	N/A	Not applicable.
(2) Where a government notice by the Minister provides for any protocol or minimum information requirement to be applied to a specialist report, the requirements as indicated in such notice will apply.	Section 3-compliance with SAHRA guidelines	



## EXECUTIVE SUMMARY

Banzai Environmental was commissioned to conduct the Palaeontological Desktop Assessment (PDA) for the proposed Sekuruwe Water Treatment Works near Sekuruwe, in the Limpopo Province. This PDA is required to confirm whether fossil material may potentially be present in the planned development area and to assess the potential impact of the proposed development on the local palaeontological heritage in order to comply with the National Heritage Resources Act (No 25 of 1999, section 38) (NHRA).

The proposed development is underlain by the Goudplaats Gneiss Suite. The PalaeoMap of the South African Heritage Resources Information System (SAHRIS) indicates that the Goudplaats-River Gneiss Suite has a Palaeontological Sensitivity of Zero. The geology has been updated (Council of Geosciences, Pretoria) and confirms that the Goudplaats-River Gneiss Suite underpins the research region.

A Low Palaeontological Significance has been allocated to the development footprint. It is therefore considered that the proposed development will not lead to damaging impacts on the palaeontological resources of the area. The construction of the development may thus be permitted in its whole extent, as the development footprint is not considered sensitive in terms of palaeontological resources.

However, if fossil remains or trace fossils are discovered during any phase of construction, either on the surface or exposed by excavations the Environmental Control Officer (ECO) in charge of these developments must be informed. These discoveries ought to be protected and the ECO must report to SAHRA (Contact details: SAHRA, 111 Harrington Street, Cape Town. PO Box 4637, Cape Town 8000, South Africa. Tel: 021 462 4502. Fax: +27 (0)21 462 4509. Web: [www.sahra.org.za](http://www.sahra.org.za)) so that mitigation can be carry out by a paleontologist.

It is consequently recommended that no further palaeontological heritage studies, ground truthing and/or specialist mitigation are required pending the discovery of newly discovered fossils.





## TABLE OF CONTENT

<b>1</b>	<b>INTRODUCTION.....</b>	<b>1</b>
<b>2</b>	<b>QUALIFICATIONS AND EXPERIENCE OF THE AUTHOR .....</b>	<b>2</b>
<b>3</b>	<b>NATIONAL HERITAGE RESOURCES ACT (25 OF 1999).....</b>	<b>2</b>
<b>4</b>	<b>METHODS AND TERMS OF REFERENCE.....</b>	<b>4</b>
4.1	Assumptions and Limitations	6
<b>5</b>	<b>GEOLOGICAL AND PALAEOLOGICAL HISTORY .....</b>	<b>6</b>
5.1	Sensitivity rating	13
<b>6</b>	<b>ADDITIONAL INFORMATION CONSULTED .....</b>	<b>14</b>
<b>7</b>	<b>IMPACT ASSESSMENT METHODOLOGY.....</b>	<b>14</b>
<b>8</b>	<b>FINDINGS AND RECOMMENDATIONS.....</b>	<b>16</b>
<b>9</b>	<b>BIBLIOGRAPHY.....</b>	<b>16</b>



## LIST OF FIGURES

*Figure 1: Regional Locality of the proposed Sekuruwe Water Treatment Works. .... 1*

*Figure 2: Regional topography of the study area. .... 1*

*Figure 3: Extract of the 1:250 000 Pietersburg 2328 (1985) Geological Map (Council for Geosciences, Pretoria) indicating that the proposed is underlain by the intrusive rocks of the Goudplaats Gneiss Suite..... 8*

*Figure 4: Extract of the 1 in 250 000 SAHRIS PalaeoMap map (Council of Geosciences) indicating the study area is underlain by sediments with a Zero (grey). .... 11*

*Figure 5: Screening tool map indicating a primarily low combined sensitivity rating for palaeontology for the study area and surroundings..... 13*

*Figure 6: Updated Geology (Council of Geosciences, Pretoria) of the proposed Sekuruwe Water Treatment Works indicates that the development is underlain by the Goudplaats-hout River Gneiss Suite (apgh). .... 14*

## LIST OF TABLES

*Table 1: Checklist for Specialist studies conformance with Appendix 6 of the EIA Regulations of 2014 (as amended) ..... iv*

*Table 2: Legend of the Pietersburg 2328 (1985) Geological Map (Council for Geosciences, Pretoria) ..... 9*

*Table 3: Extract of the Palaeotechnical Report of the Limpopo (Groenewald, et al., 2014)..... 10*

*Table 4: Palaeontological Sensitivity according to the SAHRIS PalaeoMap (Almond et al, 2013; SAHRIS website. .... 11*

*Table 5: The rating system ..... 15*

Appendix A: Methodology

Appendix B: CV



## LIST OF ABBREVIATIONS

BA	Basic Assessment
DEA	Department of Environmental Affairs
DFFE	Department of Forestry, Fisheries and the Environment
DWS	Department of Water and Sanitation
CA	National Competent Authority
ECO	Environmental Control Officer
EMPr	Environmental Management Programme
ESO	Environmental Site Officer
HIA	Heritage Impact Assessment
Ma	Millions of years ago
MLM	Mogalakwena Local Municipality
NEMA	National Environmental Management Act
NHRA	National Heritage Resources Act
ORWRDP	Olifants River Water Resources Development Project
OMMP – BRWSP	Olifants Management Model Programme Bulk Raw Water Study Phase
PIA	Palaeontological Impact Assessment
PSSA	Palaeontological Society of South Africa
Record of Decision	rRoD
SAHRA	South African Heritage Resources Agency
SAHRIS	South African Heritage Resources Information System
S&EIA	Scoping & Environmental Impact Assessment
ToR	Terms of Reference
WSDP	Water Services Development Plan
WSA	Water Services Authority
WTW	Water Treatment Works
ZNJV	Zutari Ndodana Joint Venture



## 1 INTRODUCTION

### SEKURUWE WATER TREATMENT WORKS

Zutari Ndodana Joint Venture (ZNJV)<sup>1</sup> was previously appointed by the Trans-Caledon Tunnel Authority (TCTA), on behalf of the Department of Water and Sanitation (DWS) for the provision of professional services for the Olifants River Water Resources Development Project – Phase 2 (ORWRDP-2). Initially the Project comprised of the following phases:

- ▶ Phase 2A: Construction of De Hoop Dam
- ▶ Phase 2B: Pipeline from Flag Boshielo Dam to Pruissen near Sekuruwe (72km)
- ▶ Phase 2B+: New pipe for 2B extension, where existing raw water pipeline to Sekuruwe commences
- ▶ Phase 2C: Pipeline from De Hoop Dam to Mooihoek
- ▶ Phase 2D: Pipeline from Steelpoort to Mooihoek (24km)
- ▶ Phase 2E: Pipeline from Mooihoek to Havercroft Junction (14km)
- ▶ Phase 2F: Pipeline from Havercroft Junction to Olifantspoort (44km)
- ▶ Phase 2G: Possible second pipeline parallel to Phase 2B
- ▶ Phase 2H: Changes and additions to the current Phase 2H (Lebalelo Network); and
- ▶ Phase 2I: Pipeline from the De Hoop Dam to the proposed Eskom Tubatse Pump-storage Hydro-electric Scheme (this Phase has been cancelled).

The ORWRDP-2 has since been reconstituted to become the Olifants Management Model Programme Bulk Raw Water Study Phase (OMMP – BRWSP) in recent years, with the Lebalelo Water User Association (LWUA) acting as the implementing agent for the following portions of the project:

- ▶ Phase 2B
- ▶ Phase 2B+; and
- ▶ Phase 2F

LWUA, has appointed the ZNJV for the provision of professional services for the OMMP-BRWSP. The OMMP-BRWSP bulk infrastructure plan makes provision for the construction of raw water pipeline systems to the identified target areas. These bulk pipeline systems are now identified by their respective “Phase” number. The relevant bulk pipe that would augment raw water to the Mogalakwena system (i.e., for domestic and mine use) is the proposed Phase 2B pipeline. Phase 2B has been authorised by a revised Record of Decision (rRoD) (Ref: **12/12/20/553**) issued in 2006 in terms of the Environmental Conservation Act, (No. 73 of 1989) (ECA). The proposed Water Treatment Works (WTW) are located in

---

<sup>1</sup> Previously referred to as Aurecon  
BANZAI ENVIRONMENTAL (PTY) LTD.  
Reg No. 2015/332235/07 |



two locations along the alignment of Phase 2B+. This phase is an extension of Phase 2B and spans from Pruisen reservoir to Piet-se-Kop. The gravity pipeline has been authorised by EA (12/1/9/1-W120) and EA (12/19/1-W131). The OMMP-BRWSP bulk infrastructure plan makes provision for the construction of raw water pipeline systems to the identified target areas.

The Mogalakwena Local Municipality (MLM) is a Water Services Authority (WSA) as contemplated in the Water Services Act (Act 108 of 1997). Therefore, the municipality is responsible for the realisation of the right to access to basic water services: ensuring progressive realisation of the right to basic water services, subject to available resources (that is, extension of services), the provision of effective and efficient ongoing services (performance management, by laws) and sustainability (financial planning, tariffs, service level choices, environmental monitoring). The WSA has developed a Water Services Development Plan (WSDP) in conjunction with master plans for water and sanitation.

The planning for water and wastewater services in Mogalakwena culminated in the Mogalakwena Water Master Plan (MWMP). As part of the MWMP, two new WTW are to be provided, namely a works serving the Sekuruwe Town with an ultimate capacity of 28ML/d and another servicing the areas north of Sekuruwe located near Sekuruwe Township with an ultimate design capacity of 21ML/d.

The technical features of the scheme proposed in the MWMP (for the ultimate scheme) include the following:

- ▶ A raw water pipe from the farm Pruisen (where it connects to the bulk water pipeline from Flag Boshielo Dam) to new a WTW. TATER his works will supply potable water to Sekuruwe Central Business District (CBD) and town areas.
- ▶ The raw water pipe will continue from the WTW at Sekuruwe, northwards to the rural town area of Sekuruwe. At this point a second WTW will be constructed. This WTW will be able to provide potable water to mining clients and residents for various rural villages.
- ▶ Mining water users will also be able to draw water from the raw water line at various points towards Sekuruwe. This will be handled by means of offtake agreements.

This Basic Assessment Report (BAR) has been compiled for the Sekuruwe WTW situated along the Phase 2B+ pipeline alignment. LWUA is proposing to construct the Sekuruwe WTW and associated infrastructure located north of the town of Sekuruwe near the Mogalakwena Platinum Mine, in the Mogalakwena Local Municipality. The overall objective of the proposed development is to supply potable water for commercial and residential purposes.

The above-mentioned information was provided by ZNJV.

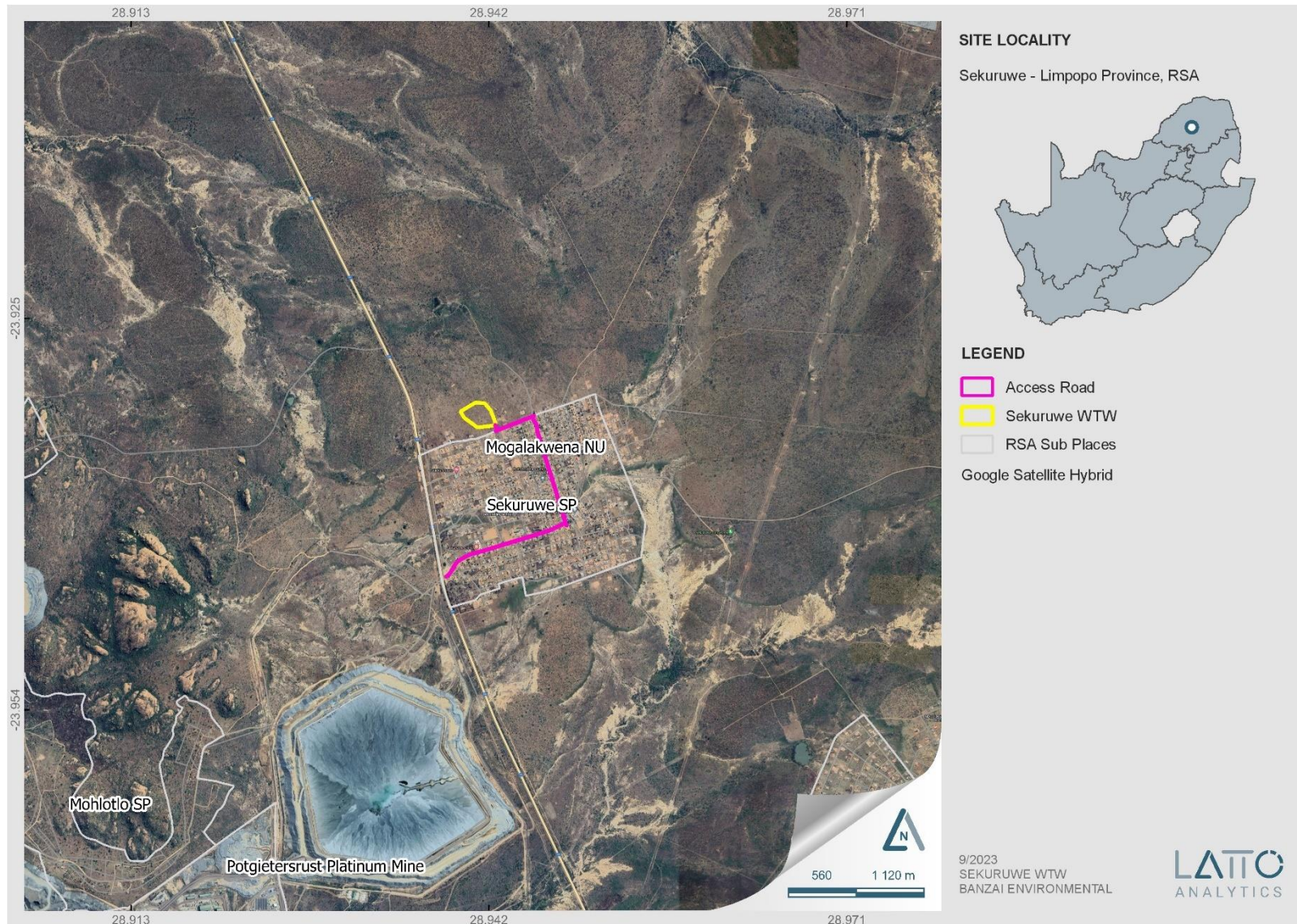


Figure 1: Regional Locality of the proposed Sekuruwe Water Treatment Works.

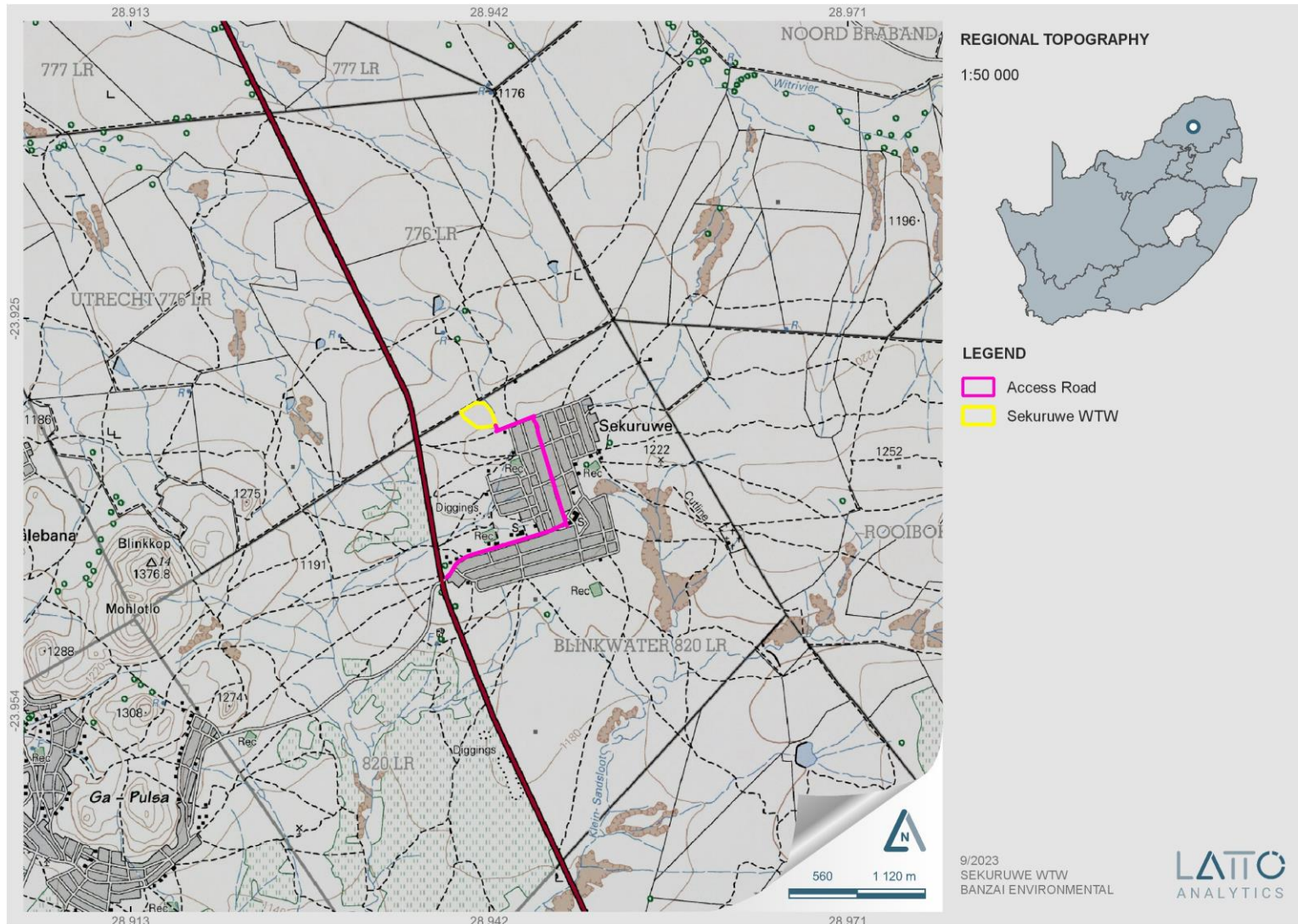


Figure 2: Regional topography of the study area.



## 2 QUALIFICATIONS AND EXPERIENCE OF THE AUTHOR

Mrs. Elize Butler conducted the current study. For developments in the Free State, KwaZulu-Natal, Eastern, Central, and Northern Cape, Northwest, Gauteng, Limpopo, and Mpumalanga, she has completed almost 300 palaeontological impact assessments. She has an MSc (*cum laude*) in Zoology with a focus in Palaeontology from the University of the Free State in South Africa, and she has more than 30 years of experience in the field. She has knowledge of finding, collecting, and curating fossils. She began conducting PIAs in 2014 and has been a member of the Palaeontological Society of South Africa (PSSA) since 2006.

## 3 NATIONAL HERITAGE RESOURCES ACT (25 OF 1999)

Cultural Heritage in South Africa, includes all heritage resources, is protected by the National Heritage Resources Act (Act No. 25 of 1999) (NHRA). Heritage resources as defined in Section 3 of the Act include **“all objects recovered from the soil or waters of South Africa, including archaeological and palaeontological objects and material, meteorites and rare geological specimens”**.

The identification, evaluation and assessment of any cultural heritage site, artefact or finds in the South African context is required and governed by the following legislation:

- National Environmental Management Act (NEMA) Act No. 107 of 1998
- National Heritage Resources Act (NHRA) Act No. 25 of 1999
- Minerals and Petroleum Resources Development Act (MPRDA) Act No. 28 of 2002
- Notice 648 of the Government Gazette 45421- general requirements for undertaking an initial site sensitivity verification where no specific assessment protocol has been identified.

The next section in each Act is directly applicable to the identification, assessment, and evaluation of cultural heritage resources.

GNR 982 (Government Gazette 38282, 14 December 2014) promulgated under the National Environmental Management Act (NEMA) Act No. 107 of 1998

- Basic Assessment Report (BAR) – Regulations 19 and 23
- Environmental Impacts Assessment (EIA) – Regulation 23
- Environmental Scoping Report (ESR) – Regulation 21
- Environmental Management Programme (EMPr) – Regulations 19 and 23

National Heritage Resources Act (NHRA) Act No. 25 of 1999

- Protection of Heritage Resources – Sections 34 to 36
- Heritage Resources Management – Section 38

The NEMA (No. 107 of 1998) states that an integrated EMP should (23:2 (b)) “...*identify, predict and evaluate the actual and potential impact on the environment, socio-economic conditions and cultural heritage*”.





In agreement with legislative requirements, EIA rating standards as well as SAHRA policies a comprehensive and legally compatible PIA report has been compiled.

Palaeontological heritage is exceptional and non-renewable and is protected by the NHRA. Palaeontological resources and may not be unearthed, broken moved, or destroyed by any development without prior assessment and without a permit from the relevant heritage resources authority as per section 35 of the NHRA.

**This Palaeontological Impact assessment forms part of the Heritage Impact Assessment (HIA) and adhere to the conditions of the Act.** According to **Section 38 (1)**, an HIA is required to assess any potential impacts to palaeontological heritage within the development footprint where:

- the construction of a road, wall, power line, pipeline, canal or other similar form of linear development or barrier exceeding 300 m in length.
- the construction of a bridge or similar structure exceeding 50 m in length.
- any development or other activity which will change the character of a site –
  - exceeding 5 000 m<sup>2</sup> in extent; or
  - involving three or more existing erven or subdivisions thereof; or
  - involving three or more erven or divisions thereof which have been consolidated within the past five years; or
  - the costs of which will exceed a sum set in terms of regulations by SAHRA or a provincial heritage resources authority; or
  - the re-zoning of a site exceeding 10 000 m<sup>2</sup> in extent; or
  - any other category of development provided for in regulations by SAHRA or a Provincial heritage resources authority.

Although minimum standards for archaeological (2007) and palaeontological (2012) assessments were published by SAHRA, GN.648 requires sensitivity verification for a site selected on the national web-based environmental screening tool for which no specific assessment protocol related to any theme has been identified. The requirements for this Government Notice (GN) are listed in Table below and the applicable section in this report is noted.

#### *Reporting requirements for GN648*

GN 648	Relevant section in report	Where not applicable in this report
2.2 (a) a desktop analysis using satellite imagery;	Section 5	
2.2 (b) a preliminary on-site inspection to identify if there are any discrepancies with the current use of land and environmental status quo versus the environmental	Desktop assessment	-



GN 648	Relevant section in report	Where not applicable in this report
sensitivity as identified on the national web-based environmental screening tool, such as new developments, infrastructure, indigenous/pristine vegetation, etc.		
2.3(a) confirms or disputes the current use of the land and environmental sensitivity as identified by the national web-based environmental screening tool;	Section 5	-
2.3(b) contains motivation and evidence (e.g. photographs) of either the verified or different use of the land and environmental sensitivity;	Section 5	-

#### 4 METHODS AND TERMS OF REFERENCE

This PDA assesses the development's potential impact on the fossil heritage. This Palaeontological Assessment is part of the HIA Report. The PIA's goals are to: 1) identify the palaeontological significance of the rock formations in the footprint; 2) evaluate the palaeontological magnitude of the formations; 3) clarify the impact on fossil heritage; and 4) make recommendations for how the developer might protect and minimize potential harm to fossil heritage, according to the "SAHRA APM Guidelines: Minimum Standards for the Archaeological and Palaeontological Components of Impact Assessment Reports".

Calculations of the palaeontological state of each rock segment and the potential impact of development on fossil history take into account the palaeontological status of the rocks, the type of development, and the amount of bedrock removed.

The Provisional DFFE Screening Tool, the SAHRIS Palaeosensitivity map, all Palaeontological Impact Assessment reports for the same area, Google Earth images, topographical and geological maps, as well as academic articles about specimens from the development area and Assemblage Zones, are all used to create scoping reports.

When the development footprint has a moderate to high palaeontological sensitivity, a field-based assessment is necessary. A desktop or field assessment of the exposed rock is used to evaluate the significance of the proposed development's impact, and recommendations for more research or mitigation are made. Excavations for the project often only take place during the building phase, changing the terrain and destroying or permanently encasing fossils at or below the ground surface. Then, access to Fossil Heritage will no longer be available for academic study.



When doing a site investigation, a palaeontologist examines the local development as well as the quantity and variety of fossils found there. This can be demonstrated by looking at representative fossiliferous rock exposures (most igneous and metamorphic rocks are not fossiliferous, whereas sedimentary rocks contain fossil heritage). Examined rock exposures frequently contain a sizeable portion of the stratigraphic unit, which is primarily made up of recently exposed (unweathered) rock. These exposures may be man-made (such as quarries, open building excavations, even railway and road cuttings) or natural (such as cliffs, and dongas as well as rocky outcrops along stream or river banks). It is usual practice for palaeontologists to record well-preserved fossils (GPS, and stratigraphic data) during field assessment examinations.

Although mitigation is often done prior to construction, it may take place if potentially fossiliferous bedrock is revealed. Fossil collection and documentation are examples of mitigation. A permit from SAHRA must be obtained before beginning any fossil excavation, and the material must be stored at an authorized facility. When mitigation is properly used, it is possible to have a positive impact by raising awareness of the palaeontological past of the area.

By physically evaluating bedrock outcrops to determine their lithology and fossil richness and crisscrossing the development footprint, one can assess an area's fossil potential. Because the presence of fossils at the surface is so unexpected, an average sample size of the region is investigated. To be clear, however, the lack of fossils in a development footprint does not automatically suggest that there is no palaeontologically important material present on the site (on or below the ground surface).

The terms of reference of a PIA are as follows:

**General Requirements:**

- Adherence to the content requirements for specialist reports in accordance with Appendix 6 of the EIA Regulations 2014, as amended;
- Adherence to all applicable best practice recommendations, appropriate legislation and authority requirements;
- Submit a comprehensive overview of all appropriate legislation, guidelines;
- Describe of the proposed project and provide information regarding the developer and consultant who commissioned the study;
- Describe location of the proposed development and provide geological and topographical maps
- Provide palaeontological and geological history of the affected area;
- Identify sensitive areas to be avoided (providing shapefiles/kmls) in the proposed development;
- Evaluate the significance of the planned development during the Pre-construction, Construction, Operation, Decommissioning Phases and Cumulative impacts. Potential impacts should be rated in terms of the direct, indirect and cumulative:



- a. **Direct impacts** are impacts that are caused directly by the activity and generally occur at the same time and at the place of the activity.
- b. **Indirect impacts** of an activity are indirect or induced changes that may occur as a result of the activity.
- c. **Cumulative impacts** are impacts that result from the incremental impact of the proposed activity on a common resource when added to the impacts of other past, present or reasonably foreseeable future activities.
  - Fair assessment of alternatives (infrastructure alternatives have been provided);
  - Recommend mitigation measures to minimise the impact of the proposed development; and
  - Detail the implications of specialist findings for the proposed development (such as permits, licenses etc).

#### 4.1 Assumptions and Limitations

The geology of the area is the focal point of geological maps, and the sheet explanations of the Geological Maps were not intended to focus on palaeontological heritage. Many inaccessible areas of South Africa have never been examined by palaeontologists, and data is typically dependent solely on aerial pictures. Locality and geological information in museums and university databases is out of date, and data acquired in the past is not always adequately documented.

Comparable Assemblage Zones in other places are also used to provide information on the existence of fossils in areas that have not before been recorded. When similar Assemblage Zones and geological formations are used for Desktop studies, it is commonly assumed that exposed fossil exists within the footprint. As a result, a field assessment will improve the accuracy of the desktop evaluation.

## 5 GEOLOGICAL AND PALAEOONTOLOGICAL HISTORY

The geology of the proposed Sekuruwe Water Treatment Works near Sekuruwe, in the Limpopo Province is indicated on the 1:250 000 Pietersburg 2328 (1985) Geological Map (Council for Geosciences, Pretoria) (**Figure 3, Table 2-3**). The proposed development is underlain by intrusive rocks of the Goudplaats Gneiss Suite (Zg; apricot) The PalaeoMap of the South African Heritage Resources Information System (SAHRIS) indicates that the Goudplaats-River Gneiss Suite has a Palaeontological Sensitivity of Zero (grey) (**Figure 4**). According to the DFFE screening report, the study area and surroundings are shown to generally have a Medium Sensitivity in terms of palaeontology (**Figure 5**). The geology has been updated (Council of Geosciences, Pretoria) and confirms that the Goudplaats-River Gneiss Suite underpins the research region (**Figure 6**).



The Precambrium Goudplaats-Hout River Gneiss is about 3333 Ma old (Brandl, 1987; Robb *et al.*, 2006). The Limpopo Belt comprise of charnockite, granulite, orthogneiss, and various other volcanic rocks and overlies the Baberton Supergroup. The Limpopo Metamorphic Province (Limpopo Mobile Belt) comprise of the Sand River Gneiss, Beit Bridge Complex, the Messina Suite and the Bandelierkop Complex. These rocks are all igneous in origin and thus unfossiliferous.

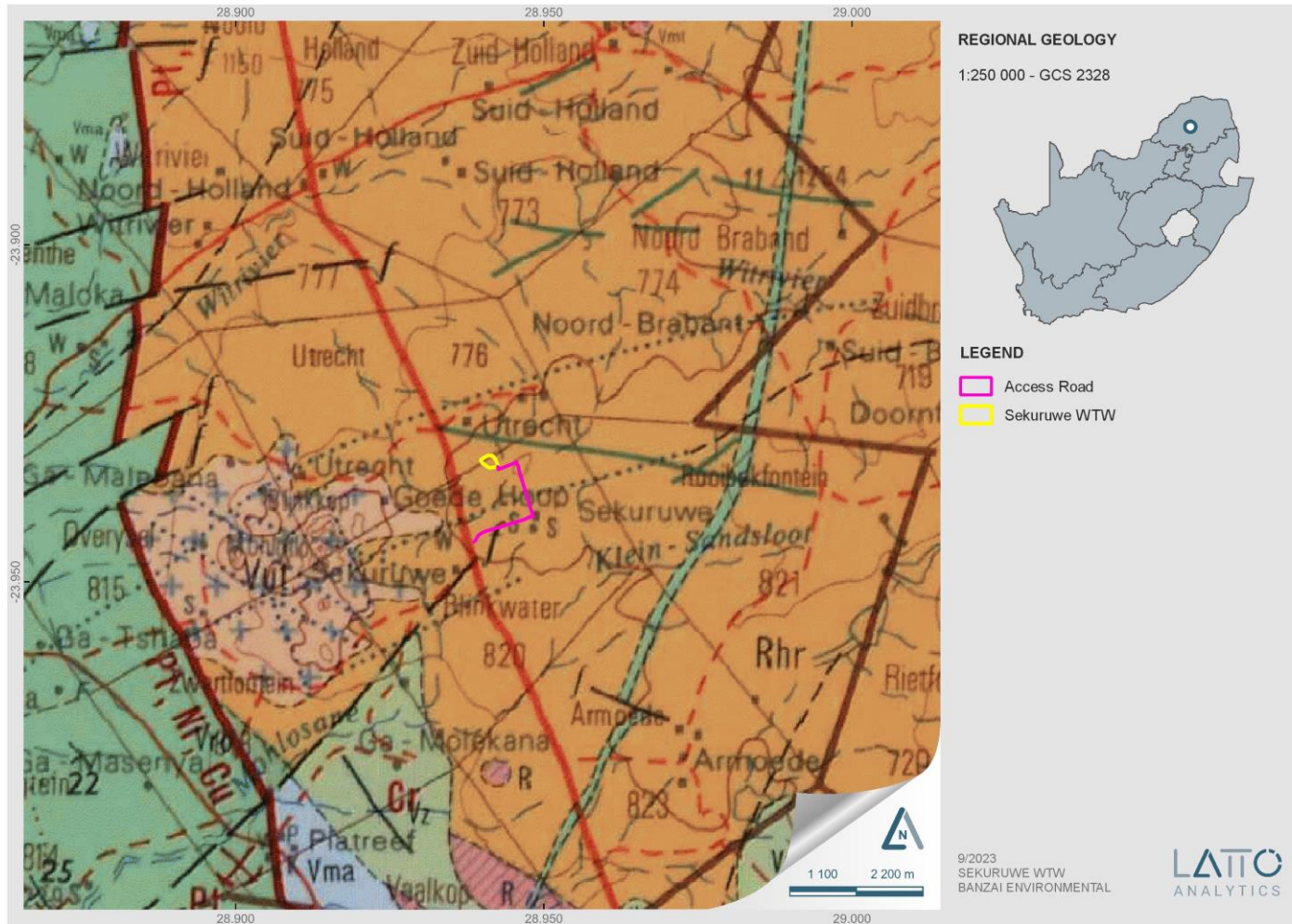


Figure 3: Extract of the 1:250 000 Pietersburg 2328 (1985) Geological Map (Council for Geosciences, Pretoria) indicating that the proposed is underlain by the intrusive rocks of the Goudplaats Gneiss Suite.



Table 2: Legend of the Pietersburg 2328 (1985) Geological Map (Council for Geosciences, Pretoria)

Rock formations present in the study area is indicated in a red polygon

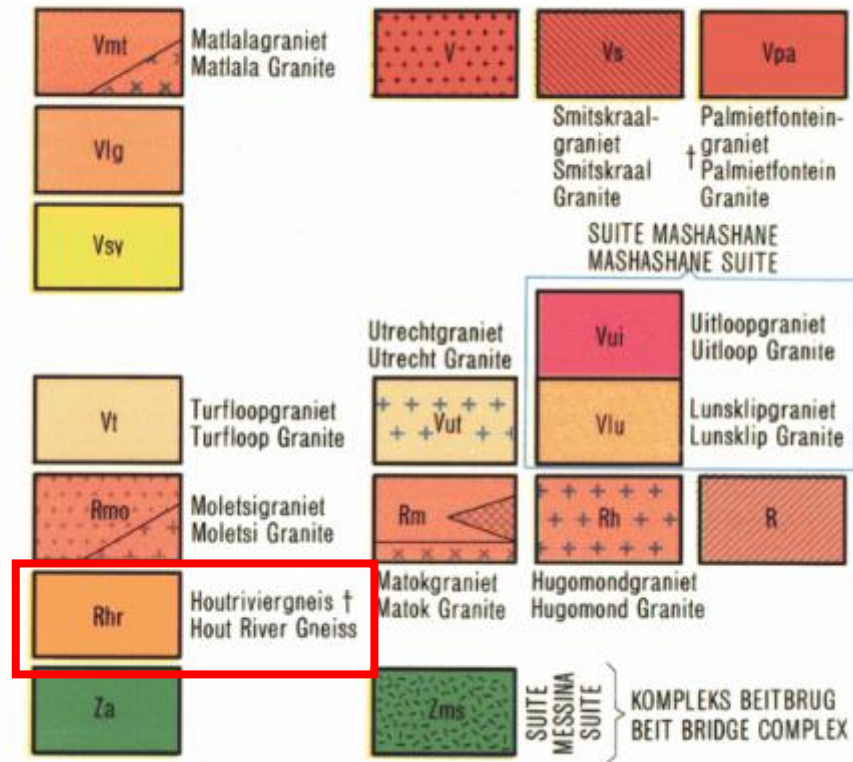




Table 3: Extract of the Palaeotechnical Report of the Limpopo (Groenewald, et al., 2014).

Group / Complex / Belt	Formation	Lithology	Fossil Heritage	Comment
ARCHAEAN GRANITE-GNEISS BASEMENT	LIMPOPO BELT Beit Bridge Complex, Modipe Complex (Zmo, Zma, Zgu) Hout River Gneiss (ZRh) Goudplats Gneiss (Zgo; Zgh) Z23; Z26; Zme; Zmd; Zmd2; Zmd3; Zmd4; Zgu3; Zgu4; Zgu5; Zgu6; Zme1; Vpl; M24; M21; Vkd; Zmp; Z57; Z58; V10; Z56; Zmk; V1; Z1; Z54	Intrusive granitoids, gneisses, migmatites Early to Late Archaean (3.6 – 2.4 Ga) (Swazian / Randian) Basic (and ultrabasic?) intrusive rocks (gabbro, etc.)	No fossils recorded	These ancient rocks build one of the oldest surviving blocks of continental crust (Kaapvaal Craton) The famous Sand River Gneisses of the Limpopo Belt near Messina (National Monument) are spectacular examples of highly metamorphosed early crustal rocks (3.4 to 3.2 Ga)



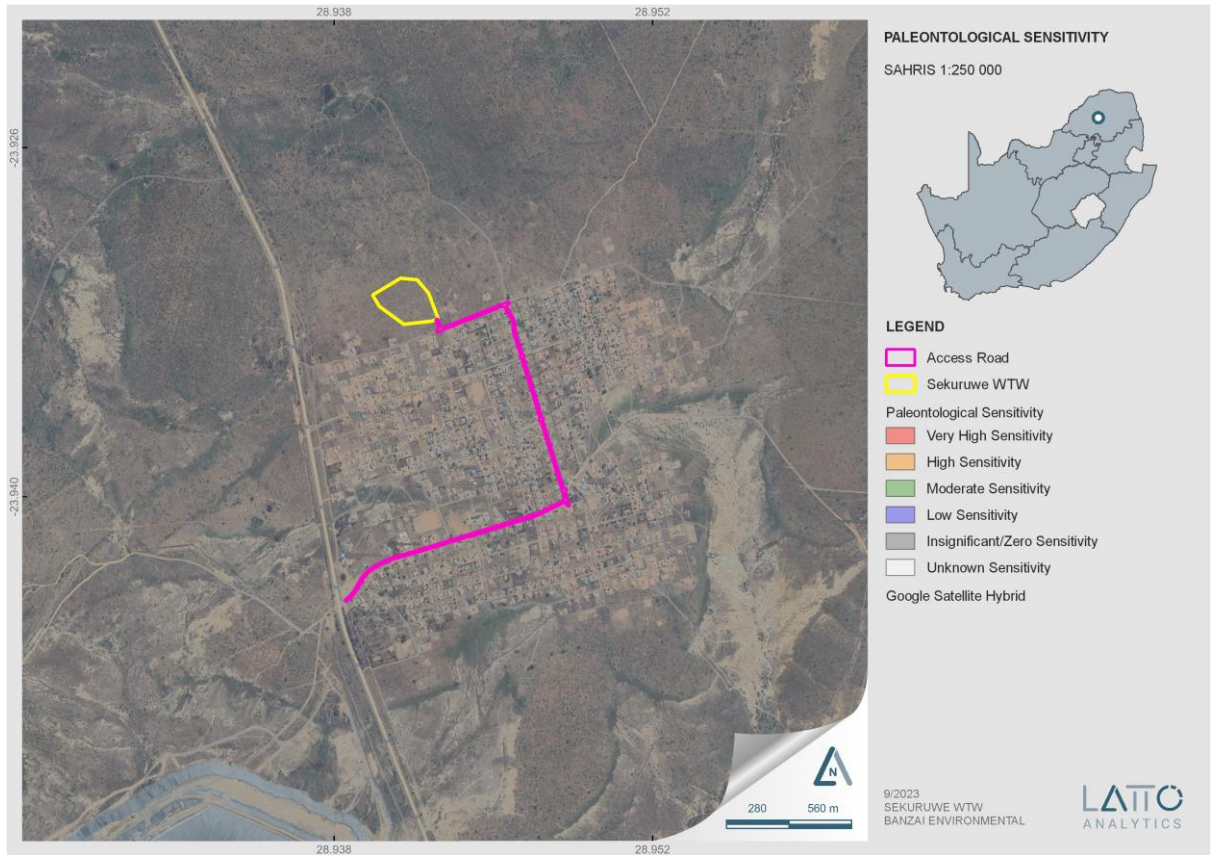


Figure 4: Extract of the 1 in 250 000 SAHRIS PalaeoMap map (Council of Geosciences) indicating the study area is underlain by sediments with a Zero (grey).

Table 4: Palaeontological Sensitivity according to the SAHRIS PalaeoMap (Almond et al, 2013; SAHRIS website).

Colour	Sensitivity	Required Action
RED	VERY HIGH	Field assessment and protocol for finds is required
ORANGE/YELLOW	HIGH	Desktop study is required and based on the outcome of the desktop study, a field assessment is likely



GREEN	MODERATE	Desktop study is required
BLUE	LOW	No palaeontological studies are required however a protocol for finds is required
GREY	INSIGNIFICANT/ZERO	No palaeontological studies are required
WHITE/CLEAR	UNKNOWN	These areas will require a minimum of a desktop study. As more information comes to light, SAHRA will continue to populate the map.



## 5.1 Sensitivity rating

A screening report was compiled by the Department of Environmental Affairs National Web-based Environmental Screening Tool as required by Regulation 16(1)(v) of the Environmental Impact Assessment Regulations 2014, as amended.

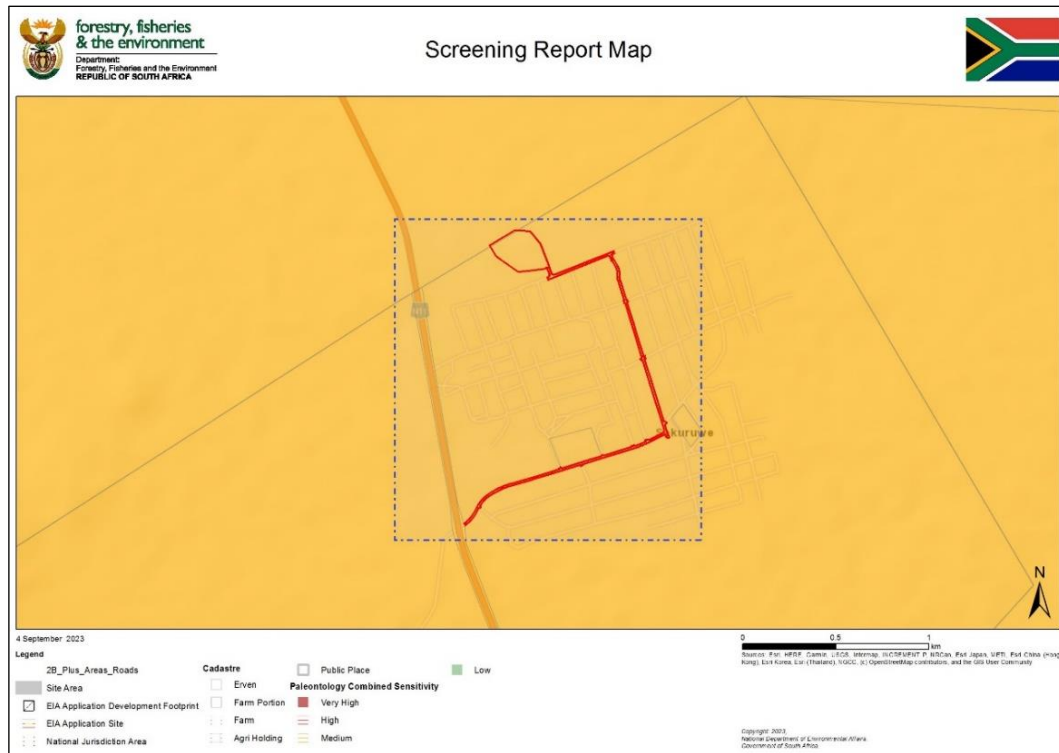
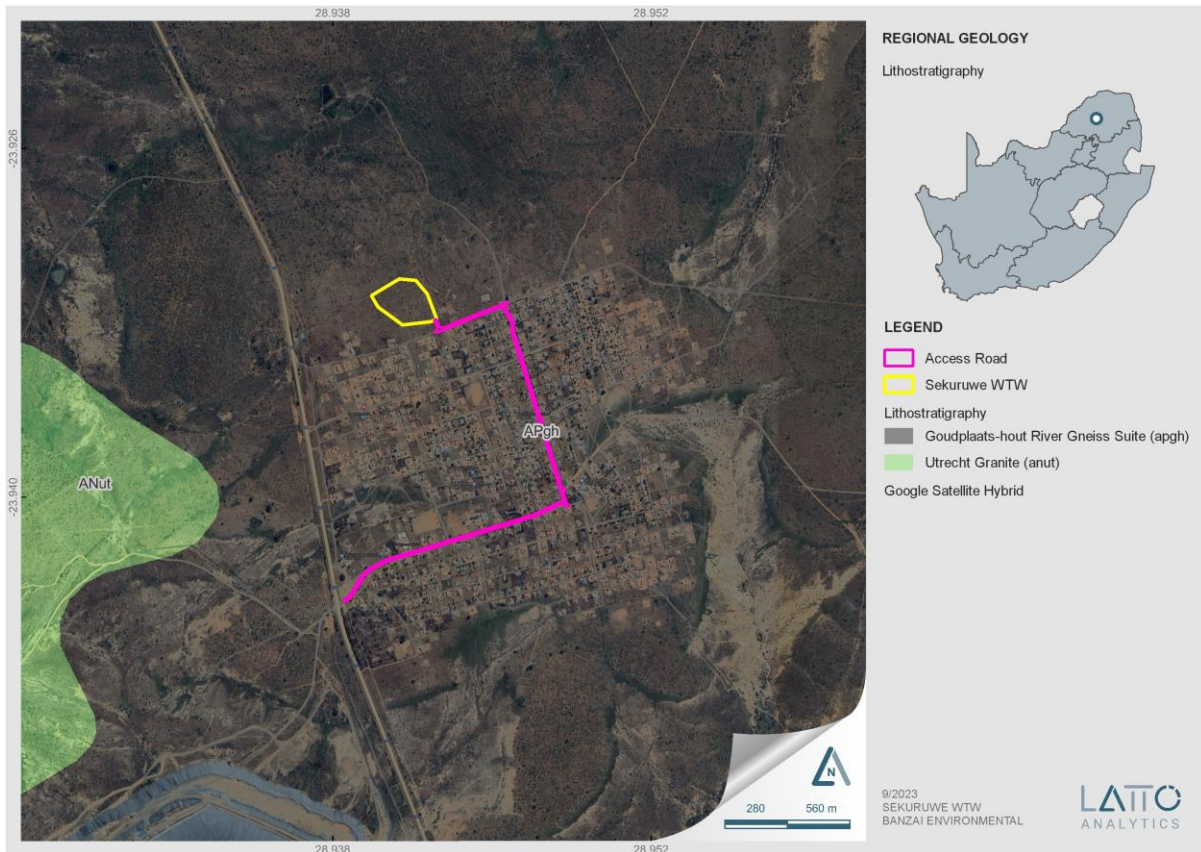


Figure 5: Screening tool map indicating a primarily low sensitivity rating for palaeontology for the study area and surroundings.

The SAHRIS PalaeoMap as well as the DFFE Screening Tool indicates that the proposed development has an Overall LOW Palaeontological Sensitivity



**Figure 6: Updated Geology (Council of Geosciences, Pretoria) of the proposed Sekuruwe Water Treatment Works indicates that the development is underlain by the Goudplaats-hout River Gneiss Suite (apgh).**

## 6 ADDITIONAL INFORMATION CONSULTED

In compiling this report the following sources were consulted:

- Geological map 1:100 000, Geology of the Republic of South Africa (Visser 1984)
- A Google Earth map with polygons of the proposed development was obtained from PGS Heritage
- 1:250 000 Pietersburg 2328 (1985) Geological Map (Council for Geosciences, Pretoria).
- Palaeotechnical report of the Limpopo Province (Groenewald et al, 2014).

## 7 IMPACT ASSESSMENT METHODOLOGY

Impact assessment must take account of the nature, scale and duration of impacts on the environment whether such impacts are positive or negative. Each impact is also assessed according to the following project phases:



- Construction.
- Operation; and
- Decommissioning.

Where necessary, the proposal for mitigation or optimisation of an impact should be detailed. A brief discussion of the impact and the rationale behind the assessment of its significance should also be included. The rating system is applied to the potential impacts on the receiving environment and includes an objective evaluation of the mitigation of the impact. In assessing the significance of each impact, the following criteria is used:

**Table 5: The rating system**

<b>Project phase</b>	<b>Construction</b>	
<b>Impact</b>	<b>Impact on Presently Unknown Fossil Heritage Resources</b>	
<b>Description of impact</b>	<b>Destruction / Damage to Presently Unknown Heritage Resources</b>	
<b>Mitigability</b>	High	Mitigation exists and will reduce the significance of impacts
<b>Potential mitigation</b>	If fossil remains or trace fossils are discovered during any phase of construction, either on the surface or exposed by excavations the Environmental Control Officer (ECO) in charge of these developments must be informed. These discoveries ought to be protected and the ECO must report to SAHRA (Contact details: SAHRA, 111 Harrington Street, Cape Town. PO Box 4637, Cape Town 8000, South Africa. Tel: 021 462 4502. Fax: +27 (0)21 462 4509. Web: <a href="http://www.sahra.org.za">www.sahra.org.za</a> ) so that mitigation can be carry out by a paleontologist.	
<b>Assessment</b>	<b>Without mitigation</b>	<b>With mitigation</b>
<b>Nature</b>	Negative	Negative
<b>Duration</b>	Long-term	Long-term
<b>Extent</b>	Site	Site
<b>Intensity</b>	Negligible	Negligible
<b>Consequence</b>	Negligible	Negligible



Probability	Very unlikely	Very unlikely
Significance	Very Low	Very Low - negative

## 8 FINDINGS AND RECOMMENDATIONS

The proposed development is underlain by the Goudplaats Gneiss Suite. The PalaeoMap of the South African Heritage Resources Information System (SAHRIS) indicates that the Goudplaats-River Gneiss Suite has a Palaeontological Sensitivity of Zero. The geology has been updated (Council of Geosciences, Pretoria) and confirms that the Goudplaats-River Gneiss Suite underpins the research region.

A Low Palaeontological Significance has been allocated to the development footprint. It is therefore considered that the proposed development will not lead to damaging impacts on the palaeontological resources of the area. The construction of the development may thus be permitted in its whole extent, as the development footprint is not considered sensitive in terms of palaeontological resources.

However, if fossil remains or trace fossils are discovered during any phase of construction, either on the surface or exposed by excavations the Environmental Control Officer (ECO) in charge of these developments must be informed. These discoveries ought to be protected and the ECO must report to SAHRA (Contact details: SAHRA, 111 Harrington Street, Cape Town. PO Box 4637, Cape Town 8000, South Africa. Tel: 021 462 4502. Fax: +27 (0)21 462 4509. Web: [www.sahra.org.za](http://www.sahra.org.za)) so that mitigation can be carry out by a paleontologist.

It is consequently recommended that no further palaeontological heritage studies, ground truthing and/or specialist mitigation are required pending the discovery of newly discovered fossils.

## 9 BIBLIOGRAPHY

Almond, J., Pether, J, And Groenewald, G. 2013. South African National Fossil Sensitivity Map. SAHRA and Council for Geosciences. Schweitzer *et al.* (1995) pp p288.

Almond, J., Pether, J, And Groenewald, G. 2013. South African National Fossil Sensitivity Map. SAHRA and Council for Geosciences. Schweitzer *et al.* (1995) pp p288.

Du Toit, A. 1954. The geology of South Africa. xii + 611pp, 41 pls. Oliver & Boyd, Edinburg.



- Groenewald, G And Groenewald, D. 2014. SAHRA Palaeotechnical Report. Palaeontological Heritage of the Limpopo Province, Pp 24.
- Kent, L. E., 1980. Part 1: Lithostratigraphy of the Republic of South Africa, South West Africa/Namibia and the Republics of Bophuthatswana, Transkei and Venda. SACS, Council for Geosciences, Stratigraphy of South Africa. 1980. South African Committee for Stratigraphy. Handbook 8, Part 1, pp 690.
- Macrae, C. 1999. Life etched in stone. Fossils of South Africa. 305 pp. The Geological Society of South Africa, Johannesburg.
- Macrae, C. 1999. Life Etched in Stone: Fossils of South Africa. Geological Society of south Africa, Johannesburg. Pp 305.
- McCarthy, T And Rubidge, B. 2005. The Story of Earth Life: A southern African perspective on a 4.6-billion-year Journey. Struik. Pp 333.
- McCarthy, T. & Rubidge, B. 2005. The story of Earth and life: a southern African perspective on a 4.6-billion-year journey. 334pp. Struik, Cape Town
- Norman, N. And Whitfield, G., 2006. Geological Journeys. De Beers, Struik, P 1-320.
- SAHRA 2012. Minimum standards: palaeontological component of heritage impact assessment reports, 15 pp. South African Heritage Resources Agency, Cape Town.
- SG 2.2 SAHRA APMHOB Guidelines, 2012. Minimum standards for palaeontological components of Heritage Impact Assessment Reports, Pp 1-15.
- Visser, D.J.L. 1984 (ed). Geological Map of South Africa 1:100 000. South African Committee for Stratigraphy. Council for Geoscience, Pretoria.
- Visser, D.J.L. 1989 (ed). Toelighting: Geologiese kaart (1:100 000). Die Geologie van die Republieke van Suid Afrika, Transkei, Bophuthatswana, Venda, Ciskei en die Koningkryke van Lesotho en Swaziland. South African Committee for Stratigraphy. Council for Geoscience, Pretoria.
- Watkeys, M.K. 1981. Provincial Geological Map of The Limpopo Belt and Environs, 1: 100 000. Geological Surveys of Botswana, South Africa and Zimbabwe; Universities of Leeds, the Witwatersrand, and Zimbabwe; Rand Afrikaans University



## APPENDIX A

### ENVIRONMENTAL IMPACT ASSESSMENT (EIA) METHODOLOGY

The Environmental Impact Assessment (EIA) Methodology assists in evaluating the overall effect of a proposed activity on the environment. Determining of the significance of an environmental impact on an environmental parameter is determined through a systematic analysis.

#### METHODOLOGY USED IN DETERMINING THE SIGNIFICANCE OF ENVIRONMENTAL IMPACTS

This section briefly outlines the proposed method for assessing the significance of the potential environmental and socio-economic impacts identified during the construction, operational and decommissioning phase.

For each predicted impact, criteria are applied to establish the significance of the impact based on likelihood (probability) and consequence, firstly in the case of no mitigation and then with the most effective mitigation measure(s) in place.

The criteria that contribute to the consequence of the impact are **INTENSITY** (the degree to which pre-development conditions are changed); the **DURATION** (length of time that the impact will continue); and the **EXTENT** (spatial scale) of the impact. The sensitivity of the receiving environment and/or sensitive receptors is incorporated into the consideration of consequence by appropriately adjusting the thresholds or scales of the intensity, duration and extent criteria, based on expert knowledge. For each impact, the specialist applies professional judgement to ascribe a numerical rating for each criterion according to the ratings provided. The consequence is then established using the formula:

$$\text{Consequence} = \text{intensity} \times (\text{duration} + \text{extent})$$

Depending on the numerical result of this calculation, the impact's consequence would be classified as one of the following:

- ▶ Extremely; highly; moderately; slightly detrimental;
- ▶ Negligible; or
- ▶ Slightly, moderately, highly or extremely beneficial.

To determine the significance of an impact, the probability (or likelihood) of that impact occurring is also taken into account. In assigning probability, the specialist must take into account the likelihood of occurrence and the degree of uncertainty and detectability of the impact. Significance is calculated according to the following formula:

$$\text{Significance} = \text{consequence} \times \text{probability}$$

Depending on the numerical result of this calculation, the impact would fall into a significance category of one of the following:



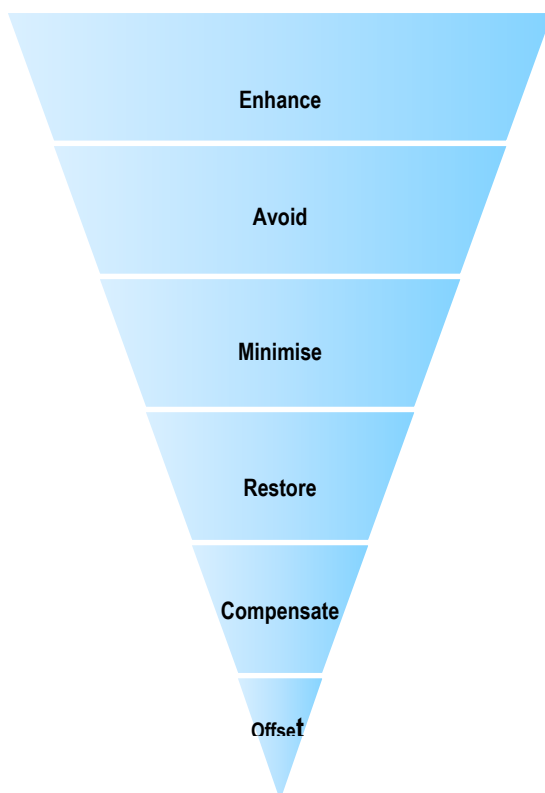


- ▶ Very Low;
- ▶ Low (negative or positive);
- ▶ Moderate (negative or positive);
- ▶ High (negative or positive);
- ▶ Very High (negative or positive).

### METHODOLOGY FOR IDENTIFICATION OF MITIGATION MEASURES

The mitigation hierarchy (**Error! Reference source not found.**) illustrates the actions which can be undertaken to respond to negative impacts and the preference given to mitigation measures. The topmost measures are preferred, and the preference for mitigation measures decreases the further one moves down the hierarchy.

For each impact assessed, mitigation measures will be proposed to reduce and/ or avoid negative impacts and enhance positive impacts. The mitigation measures identified by the specialists will be reviewed for feasibility with the proponent and then incorporated into the Environmental Management Programme (EMPr) during the EIA Phase to ensure that they are implemented throughout the lifecycle of the proposed project. The EMPr would become a legally binding document should this project receive an Environmental Authorisation.



**Impact avoidance:** This step is most effective when applied at an early stage of project planning. It can be achieved by:

- ▶ Not undertaking certain projects or elements that could result in adverse impacts;
- ▶ Avoiding areas that are environmentally sensitive; and
- ▶ Putting in place preventative measures to stop adverse impacts from occurring.

**Impact minimisation:** This step is usually taken during impact identification and prediction to limit or reduce the degree, extent, magnitude, or duration of adverse impacts. It can be achieved by:

- ▶ Scaling down or relocating the proposal;
- ▶ Redesigning elements of the project; and
- ▶ Taking supplementary measures to manage the impacts.

**Impact compensation:** This step is usually applied to remedy unavoidable residual adverse impacts. It can be achieved by:

- ▶ Example, by habitat enhancement;
- ▶ Restoration of the affected site or environment to its previous state or better; and
- ▶ Replacement of the same resource values at another location (off-set), for example, by wetland engineering to provide

The mitigation described in the above diagram represents the full range of plausible and pragmatic measures that can be implemented.

*Mitigation Hierarchy*



## APPENDIX B

PROFESSION: Palaeontologist

YEARS' EXPERIENCE: 30 years in Palaeontology

EDUCATION: B.Sc Botany and Zoology, 1988  
University of the Orange Free State

B. Sc (Hons) Zoology, 1991  
University of the Orange Free State

Management Course, 1991  
University of the Orange Free State

M. Sc. *Cum laude* (Zoology), 2009  
University of the Free State

Dissertation title: The postcranial skeleton of the Early Triassic non-mammalian Cynodont *Galesaurus planiceps*: implications for biology and lifestyle

### MEMBERSHIP

Palaeontological Society of South Africa (PSSA) 2006-currently

### EMPLOYMENT HISTORY

Part time Laboratory assistant	Department of Zoology & Entomology University of the Free State Zoology 1989- 1992
Part time laboratory assistant	Department of Virology University of the Free State Zoology 1992
Research Assistant	National Museum, Bloemfontein 1993 – 1997
Principal Research Assistant and Collection Manager	National Museum, Bloemfontein 1998–2022

### TECHNICAL REPORTS



- Butler, E. 2014. Palaeontological Impact Assessment of the proposed development of private dwellings on portion 5 of farm 304 Matjesfontein Keurboomstrand, Knysna District, Western Cape Province. Bloemfontein.
- Butler, E. 2014. Palaeontological Impact Assessment for the proposed upgrade of existing water supply infrastructure at Noupoot, Northern Cape Province. 2014. Bloemfontein.
- Butler, E. 2015. Palaeontological impact assessment of the proposed consolidation, re-division, and development of 250 serviced erven in Nieu-Bethesda, Camdeboo local municipality, Eastern Cape. Bloemfontein.
- Butler, E. 2015. Palaeontological impact assessment of the proposed mixed land developments at Rooikraal 454, Vrede, Free State. Bloemfontein.
- Butler, E. 2015. Palaeontological exemption report of the proposed truck stop development at Palmiet 585, Vrede, Free State. Bloemfontein.
- Butler, E. 2015. Palaeontological impact assessment of the proposed Orange Grove 3500 residential development, Buffalo City Metropolitan Municipality East London, Eastern Cape. Bloemfontein.
- Butler, E. 2015. Palaeontological Impact Assessment of the proposed Gonubie residential development, Buffalo City Metropolitan Municipality East London, Eastern Cape Province. Bloemfontein.
- Butler, E. 2015. Palaeontological Impact Assessment of the proposed Ficksburg raw water pipeline. Bloemfontein.
- Butler, E. 2015. Palaeontological Heritage Impact Assessment report on the establishment of the 65 mw Majuba Solar Photovoltaic facility and associated infrastructure on portion 1, 2 and 6 of the farm Witkoppies 81 HS, Mpumalanga Province. Bloemfontein.
- Butler, E. 2015. Palaeontological Impact Assessment of the proposed township establishment on the remainder of portion 6 and 7 of the farm Sunnyside 2620, Bloemfontein, Mangaung metropolitan municipality, Free State, Bloemfontein.
- Butler, E. 2015. Palaeontological Impact Assessment of the proposed Woodhouse 1 photovoltaic solar energy facilities and associated infrastructure on the farm Woodhouse729, near Vryburg, North West Province. Bloemfontein.
- Butler, E. 2015. Palaeontological Impact Assessment of the proposed Woodhouse 2 photovoltaic solar energy facilities and associated infrastructure on the farm Woodhouse 729, near Vryburg, North West Province. Bloemfontein.
- Butler, E. 2015. Palaeontological Impact Assessment of the proposed Orkney solar energy farm and associated infrastructure on the remaining extent of Portions 7 and 21 of the farm Wolvehuis 114, near Orkney, North West Province. Bloemfontein.
- Butler, E. 2015. Palaeontological Impact Assessment of the proposed Spectra foods broiler houses and abattoir on the farm Maiden Manor 170 and Ashby Manor 171, Lukhanji Municipality, Queenstown, Eastern Cape Province. Bloemfontein.
- Butler, E. 2016. Palaeontological Impact Assessment of the proposed construction of the 150 MW Noupoot concentrated solar power facility and associated infrastructure on portion 1 and 4 of the



farm Carolus Poort 167 and the remainder of Farm 207, near Noupoot, Northern Cape. Prepared for Savannah Environmental. Bloemfontein.

Butler, E. 2016. Palaeontological Impact Assessment of the proposed Woodhouse 1 Photovoltaic Solar Energy facility and associated infrastructure on the farm Woodhouse 729, near Vryburg, North West Province. Bloemfontein.

Butler, E. 2016. Palaeontological Impact Assessment of the proposed Woodhouse 2 Photovoltaic Solar Energy facility and associated infrastructure on the farm Woodhouse 729, near Vryburg, North West Province. Bloemfontein.

Butler, E. 2016. Proposed 132kV overhead power line and switchyard station for the authorised Solis Power 1 CSP project near Upington, Northern Cape. Bloemfontein.

Butler, E. 2016. Palaeontological Impact Assessment of the proposed Senqu Pedestrian Bridges in Ward 5 of Senqu Local Municipality, Eastern Cape Province. Bloemfontein.

Butler, E. 2016. Recommendation from further Palaeontological Studies: Proposed Construction of the Modderfontein Filling Station on Erf 28 Portion 30, Founders Hill, City of Johannesburg, Gauteng Province. Bloemfontein.

Butler, E. 2016. Recommendation from further Palaeontological Studies: Proposed Construction of the Modikwa Filling Station on a Portion of Portion 2 of Mooihoek 255 Kt, Greater Tubatse Local Municipality, Limpopo Province. Bloemfontein.

Butler, E. 2016. Recommendation from further Palaeontological Studies: Proposed Construction of the Heidedal filling station on Erf 16603, Heidedal Extension 24, Mangaung Local Municipality, Bloemfontein, Free State Province. Bloemfontein.

Butler, E. 2016. Recommended Exemption from further Palaeontological studies: Proposed Construction of the Gunstfontein Switching Station, 132kv Overhead Power Line (Single or Double Circuit) and ancillary infrastructure for the Gunstfontein Wind Farm Near Sutherland, Northern Cape Province. Savannah South Africa. Bloemfontein.

Butler, E. 2016. Palaeontological Impact Assessment of the proposed Galla Hills Quarry on the remainder of the farm Roode Krantz 203, in the Lukhanji Municipality, division of Queenstown, Eastern Cape Province. Bloemfontein.

Butler, E. 2016. Chris Hani District Municipality Cluster 9 water backlog project phases 3a and 3b: Palaeontology inspection at Tsomo WTW. Bloemfontein.

Butler, E. 2016. Palaeontological Impact Assessment of the proposed construction of the 150 MW Noupoot concentrated solar power facility and associated infrastructure on portion 1 and 4 of the farm Carolus Poort 167 and the remainder of Farm 207, near Noupoot, Northern Cape. Savannah South Africa. Bloemfontein.

Butler, E. 2016. Palaeontological Impact Assessment of the proposed upgrading of the main road MR450 (R335) from Motherwell to Addo within the Nelson Mandela Bay Municipality and Sunday's River valley Local Municipality, Eastern Cape Province. Bloemfontein.



- Butler, E. 2016. Palaeontological Impact Assessment construction of the proposed Metals Industrial Cluster and associated infrastructure near Kuruman, Northern Cape Province. Savannah South Africa. Bloemfontein.
- Butler, E. 2016. Palaeontological Impact Assessment for the proposed construction of up to a 132kv power line and associated infrastructure for the proposed Kalkaar Solar Thermal Power Plant near Kimberley, Free State and Northern Cape Provinces. PGS Heritage. Bloemfontein.
- Butler, E. 2016. Palaeontological Impact Assessment of the proposed development of two burrow pits (DR02625 and DR02614) in the Enoch Mgijima Municipality, Chris Hani District, Eastern Cape.
- Butler, E. 2016. Ezibeleni waste Buy-Back Centre (near Queenstown), Enoch Mgijima Local Municipality, Eastern Cape. Bloemfontein.
- Butler, E. 2016. Palaeontological Impact Assessment for the proposed construction of two 5 Mw Solar Photovoltaic Power Plants on Farm Wildebeestkuil 59 and Farm Leeuwbosch 44, Leeudoringstad, North West Province. Bloemfontein.
- Butler, E. 2016. Palaeontological Impact Assessment for the proposed development of four Leeuwborg Wind farms and basic assessments for the associated grid connection near Loeriesfontein, Northern Cape Province. Bloemfontein.
- Butler, E. 2016. Palaeontological impact assessment for the proposed Aggeneys south prospecting right project, Northern Cape Province. Bloemfontein.
- Butler, E. 2016. Palaeontological impact assessment of the proposed Motuoane Ladysmith Exploration right application, KwaZulu Natal. Bloemfontein.
- Butler, E. 2016. Palaeontological impact assessment for the proposed construction of two 5 MW solar photovoltaic power plants on farm Wildebeestkuil 59 and farm Leeuwbosch 44, Leeudoringstad, North West Province. Bloemfontein.
- Butler, E. 2016: Palaeontological desktop assessment of the establishment of the proposed residential and mixed-use development on the remainder of portion 7 and portion 898 of the farm Knopjeslaagte 385 Ir, located near Centurion within the Tshwane Metropolitan Municipality of Gauteng Province. Bloemfontein.
- Butler, E. 2017. Palaeontological impact assessment for the proposed development of a new cemetery, near Kathu, Gamagara local municipality and John Taolo Gaetsewe district municipality, Northern Cape. Bloemfontein.
- Butler, E. 2017. Palaeontological Impact Assessment of The Proposed Development of The New Open Cast Mining Operations on The Remaining Portions Of 6, 7, 8 And 10 Of the Farm Kwaggafontein 8 In the Carolina Magisterial District, Mpumalanga Province. Bloemfontein.
- Butler, E. 2017. Palaeontological Desktop Assessment for the Proposed Development of a Wastewater Treatment Works at Lanseria, Gauteng Province. Bloemfontein.
- Butler, E. 2017. Palaeontological Scoping Report for the Proposed Construction of a Warehouse and Associated Infrastructure at Perseverance in Port Elizabeth, Eastern Cape Province.



- Butler, E. 2017. Palaeontological Desktop Assessment for the Proposed Establishment of a Diesel Farm and a Haul Road for the Tshipi Borwa mine Near Hotazel, In the John Taolo Gaetsewe District Municipality in the Northern Cape Province. Bloemfontein.
- Butler, E. 2017. Palaeontological Desktop Assessment for the Proposed Changes to Operations at the UMK Mine near Hotazel, In the John Taolo Gaetsewe District Municipality in the Northern Cape Province. Bloemfontein.
- Butler, E. 2017. Palaeontological Impact Assessment for the Development of the Proposed Ventersburg Project-An Underground Mining Operation near Ventersburg and Henneman, Free State Province. Bloemfontein.
- Butler, E. 2017. Palaeontological desktop assessment of the proposed development of a 3000 MW combined cycle gas turbine (CCGT) in Richards Bay, Kwazulu-Natal. Bloemfontein.
- Butler, E. 2017. Palaeontological Impact Assessment for the Development of the Proposed Revalidation of the lapsed General Plans for Elliotdale, Mbhashe Local Municipality. Bloemfontein.
- Butler, E. 2017. Palaeontological assessment of the proposed development of a 3000 MW Combined Cycle Gas Turbine (CCGT) in Richards Bay, Kwazulu-Natal. Bloemfontein.
- Butler, E. 2017. Palaeontological Impact Assessment of the proposed development of the new open cast mining operations on the remaining portions of 6, 7, 8 and 10 of the farm Kwaggafontein 8 10 in the Albert Luthuli Local Municipality, Gert Sibande District Municipality, Mpumalanga Province. Bloemfontein.
- Butler, E. 2017. Palaeontological Impact Assessment of the proposed mining of the farm Zandvoort 10 in the Albert Luthuli Local Municipality, Gert Sibande District Municipality, Mpumalanga Province. Bloemfontein.
- Butler, E. 2017. Palaeontological Desktop Assessment for the proposed Lanseria outfall sewer pipeline in Johannesburg, Gauteng Province. Bloemfontein.
- Butler, E. 2017. Palaeontological Desktop Assessment of the proposed development of open pit mining at Pit 36W (New Pit) and 62E (Dishaba) Amandelbult Mine Complex, Thabazimbi, Limpopo Province. Bloemfontein.
- Butler, E. 2017. Palaeontological impact assessment of the proposed development of the sport precinct and associated infrastructure at Merrifield Preparatory school and college, Amathole Municipality, East London. PGS Heritage. Bloemfontein.
- Butler, E. 2017. Palaeontological impact assessment of the proposed construction of the Lehae training and fire station, Lenasia, Gauteng Province. Bloemfontein.
- Butler, E. 2017. Palaeontological Desktop Assessment of the proposed development of the new open cast mining operations of the Impunzi mine in the Mpumalanga Province. Bloemfontein.
- Butler, E. 2017. Palaeontological Desktop Assessment of the construction of the proposed Viljoenskroon Munic 132 KV line, Vierfontein substation and related projects. Bloemfontein.
- Butler, E. 2017. Palaeontological Desktop Assessment of the proposed rehabilitation of 5 ownerless asbestos mines. Bloemfontein.



- Butler, E. 2017. Palaeontological Desktop Assessment of the proposed development of the Lephale coal and power project, Lephale, Limpopo Province, Republic of South Africa. Bloemfontein.
- Butler, E. 2017. Palaeontological Impact Assessment of the proposed construction of a 132KV powerline from the Tweespruit distribution substation (in the Mantsopa local municipality) to the Driedorp rural substation (within the Naledi local municipality), Free State province. Bloemfontein.
- Butler, E. 2017. Palaeontological Desktop Assessment of the proposed development of the new coal-fired power plant and associated infrastructure near Makhado, Limpopo Province. Bloemfontein.
- Butler, E. 2017. Palaeontological Impact Assessment of the proposed construction of a Photovoltaic Solar Power station near Collett substation, Middelburg, Eastern Cape. Bloemfontein.
- Butler, E. 2017. Palaeontological Impact Assessment for the proposed township establishment of 2000 residential sites with supporting amenities on a portion of farm 826 in Botshabelo West, Mangaung Metro, Free State Province. Bloemfontein.
- Butler, E. 2017. Palaeontological Desktop Assessment for the proposed prospecting right project without bulk sampling, in the Koa Valley, Northern Cape Province. Bloemfontein.
- Butler, E. 2017. Palaeontological Desktop Assessment for the proposed Aroams prospecting right project, without bulk sampling, near Aggeneys, Northern Cape Province. Bloemfontein.
- Butler, E. 2017. Palaeontological Impact Assessment of the proposed Belvior aggregate quarry II on portion 7 of the farm Maidenhead 169, Enoch Mgijima Municipality, division of Queenstown, Eastern Cape. Bloemfontein.
- Butler, E. 2017. PIA site visit and report of the proposed Galla Hills Quarry on the remainder of the farm Roode Krantz 203, in the Lukhanji Municipality, division of Queenstown, Eastern Cape Province. Bloemfontein.
- Butler, E. 2017. Palaeontological Impact Assessment of the proposed construction of Tina Falls Hydropower and associated power lines near Cumbu, Mthlontlo Local Municipality, Eastern Cape. Bloemfontein.
- Butler, E. 2017. Palaeontological Desktop Assessment of the proposed construction of the Mangaung Gariap Water Augmentation Project. Bloemfontein.
- Butler, E. 2017. Palaeontological Impact Assessment of the proposed Belvoir aggregate quarry II on portion 7 of the farm Maidenhead 169, Enoch Mgijima Municipality, division of Queenstown, Eastern Cape. Bloemfontein.
- Butler, E. 2017. Palaeontological Impact Assessment of the proposed construction of the Melkspruit-Rouxville 132KV Power line. Bloemfontein.
- Butler, E. 2017. Palaeontological Desktop Assessment of the proposed development of a railway siding on a Portion of portion 41 of the farm Rustfontein 109 is, Govan Mbeki local municipality, Gert Sibande district municipality, Mpumalanga Province. Bloemfontein.
- Butler, E. 2017. Palaeontological Impact Assessment of the proposed consolidation of the proposed Ilima Colliery in the Albert Luthuli local municipality, Gert Sibande District Municipality, Mpumalanga Province. Bloemfontein.



- Butler, E. 2017. Palaeontological Desktop Assessment of the proposed extension of the Kareerand Tailings Storage Facility, associated borrow pits as well as a storm water drainage channel in the Vaal River near Stilfontein, North West Province. Bloemfontein.
- Butler, E. 2017. Palaeontological Desktop Assessment of the proposed construction of a filling station and associated facilities on the Erf 6279, district municipality of John Taolo Gaetsewe District, Ga-Segonyana Local Municipality Northern Cape. Bloemfontein.
- Butler, E. 2017. Palaeontological Desktop Assessment of the proposed of the Lephallale Coal and Power Project, Lephallale, Limpopo Province, Republic of South Africa. Bloemfontein.
- Butler, E. 2017. Palaeontological Desktop Assessment of the proposed Overvaal Trust PV Facility, Buffelspoort, North West Province. Bloemfontein.
- Butler, E. 2017. Palaeontological Impact Assessment of the proposed development of the H<sub>2</sub> Energy Power Station and associated infrastructure on Portions 21; 22 And 23 of the farm Hartebeestspruit in the Thembisile Hani Local Municipality, Nkangala District near Kwamhlanga, Mpumalanga Province. Bloemfontein.
- Butler, E. 2017. Palaeontological Impact Assessment of the proposed upgrade of the Sandriver Canal and Klippan Pump station in Welkom, Free State Province. Bloemfontein.
- Butler, E. 2017. Palaeontological Impact Assessment of the proposed upgrade of the 132kv and 11kv power line into a dual circuit above ground power line feeding into the Urania substation in Welkom, Free State Province. Bloemfontein.
- Butler, E. 2017. Palaeontological Desktop Assessment of the proposed Swaziland-Mozambique border patrol road and Mozambique barrier structure. Bloemfontein.
- Butler, E. 2017. Palaeontological Impact Assessment of the proposed diamonds alluvial & diamonds general prospecting right application near Christiana on the remaining extent of portion 1 of the farm Kaffraria 314, registration division HO, North West Province. Bloemfontein.
- Butler, E. 2017. Palaeontological Desktop Assessment for the proposed development of Wastewater Treatment Works on Hartebeesfontein, near Panbult, Mpumalanga. Bloemfontein.
- Butler, E. 2017. Palaeontological Desktop Assessment for the proposed development of Wastewater Treatment Works on Rustplaas near Piet Retief, Mpumalanga. Bloemfontein.
- Butler, E. 2018. Palaeontological Impact Assessment for the Proposed Landfill Site in Luckhoff, Letsemeng Local Municipality, Xhariep District, Free State. Bloemfontein.
- Butler, E. 2018. Palaeontological Impact Assessment of the proposed development of the new Mutsho coal-fired power plant and associated infrastructure near Makhado, Limpopo Province. Bloemfontein.
- Butler, E. 2018. Palaeontological Impact Assessment of the authorisation and amendment processes for Manangu mine near Delmas, Victor Khanye local municipality, Mpumalanga. Bloemfontein.
- Butler, E. 2018. Palaeontological Desktop Assessment for the proposed Mashishing township establishment in Mashishing (Lydenburg), Mpumalanga Province. Bloemfontein.
- Butler, E. 2018. Palaeontological Desktop Assessment for the Proposed Mlonzi Estate Development near Lusikisiki, Ngquza Hill Local Municipality, Eastern Cape. Bloemfontein.





- Butler, E. 2018. Palaeontological Phase 1 Assessment of the proposed Swaziland-Mozambique border patrol road and Mozambique barrier structure. Bloemfontein.
- Butler, E. 2018. Palaeontological Desktop Assessment for the proposed electricity expansion project and Sekgame Switching Station at the Sishen Mine, Northern Cape Province. Bloemfontein.
- Butler, E. 2018. Palaeontological field assessment of the proposed construction of the Zonnebloem Switching Station (132/22kV) and two loop-in loop-out power lines (132kV) in the Mpumalanga Province. Bloemfontein.
- Butler, E. 2018. Palaeontological Field Assessment for the proposed re-alignment and de-commissioning of the Firham-Platrand 88kv Powerline, near Standerton, Lekwa Local Municipality, Mpumalanga province. Bloemfontein.
- Butler, E. 2018. Palaeontological Desktop Assessment of the proposed Villa Rosa development In the Buffalo City Metropolitan Municipality, East London. Bloemfontein.
- Butler, E. 2018. Palaeontological field Assessment of the proposed Villa Rosa development In the Buffalo City Metropolitan Municipality, East London. Bloemfontein.
- Butler, E. 2018. Palaeontological desktop assessment of the proposed Mookodi – Mahikeng 400kV line, North West Province. Bloemfontein.
- Butler, E. 2018. Palaeontological Desktop Assessment for the proposed Thornhill Housing Project, Ndlambe Municipality, Port Alfred, Eastern Cape Province. Bloemfontein.
- Butler, E. 2018. Palaeontological desktop assessment of the proposed housing development on portion 237 of farm Hartebeestpoort 328. Bloemfontein.
- Butler, E. 2018. Palaeontological desktop assessment of the proposed New Age Chicken layer facility located on holding 75 Endicott near Springs in Gauteng. Bloemfontein.
- Butler, E. 2018 Palaeontological Desktop Assessment for the development of the proposed Leslie 1 Mining Project near Leandra, Mpumalanga Province. Bloemfontein.
- Butler, E. 2018. Palaeontological field assessment of the proposed development of the Wildealskloof mixed use development near Bloemfontein, Free State Province. Bloemfontein.
- Butler, E. 2018. Palaeontological Field Assessment of the proposed Megamor Extension, East London. Bloemfontein
- Butler, E. 2018. Palaeontological Impact Assessment of the proposed diamonds Alluvial & Diamonds General Prospecting Right Application near Christiana on the Remaining Extent of Portion 1 of the Farm Kaffraria 314, Registration Division HO, North West Province. Bloemfontein.
- Butler, E. 2018. Palaeontological Impact Assessment of the proposed construction of a new 11kV (1.3km) Power Line to supply electricity to a cell tower on farm 215 near Delpportshoop in the Northern Cape. Bloemfontein.
- Butler, E. 2018. Palaeontological Field Assessment of the proposed construction of a new 22 kV single wood pole structure power line to the proposed MTN tower, near Britstown, Northern Cape Province. Bloemfontein.
- Butler, E. 2018. Palaeontological Exemption Letter for the proposed reclamation and reprocessing of the City Deep Dumps in Johannesburg, Gauteng Province. Bloemfontein.



- Butler, E. 2018. Palaeontological Exemption letter for the proposed reclamation and reprocessing of the City Deep Dumps and Rooikraal Tailings Facility in Johannesburg, Gauteng Province. Bloemfontein.
- Butler, E. 2018. Proposed Kalabasfontein Mine Extension project, near Bethal, Govan Mbeki District Municipality, Mpumalanga. Bloemfontein.
- Butler, E. 2018. Palaeontological Desktop Assessment for the development of the proposed Leslie 1 Mining Project near Leandra, Mpumalanga Province. Bloemfontein.
- Butler, E. 2018. Palaeontological Desktop Assessment of the proposed Mookodi – Mahikeng 400kV Line, North West Province. Bloemfontein.
- Butler, E. 2018. Environmental Impact Assessment (EIA) for the Proposed 325mw Rondekop Wind Energy Facility between Matjiesfontein and Sutherland in the Northern Cape Province.
- Butler, E. 2018. Palaeontological Impact Assessment of the proposed construction of the Tooverberg Wind Energy Facility, and associated grid connection near Touws River in the Western Cape Province. Bloemfontein.
- Butler, E. 2018. Palaeontological impact assessment of the proposed Kalabasfontein Mining Right Application, near Bethal, Mpumalanga.
- Butler, E., 2019. Palaeontological Desktop Assessment of the proposed Westrand Strengthening Project Phase II.
- Butler, E., 2019. Palaeontological Field Assessment for the proposed Sirius 3 Photovoltaic Solar Energy Facility near Upington, Northern Cape Province
- Butler, E., 2019. Palaeontological Field Assessment for the proposed Sirius 4 Photovoltaic Solar Energy Facility near Upington, Northern Cape Province
- Butler, E., 2019. Palaeontological Field Assessment for Heuningspruit PV 1 Solar Energy Facility near Koppies, Ngwathe Local Municipality, Free State Province.
- Butler, E., 2019. Palaeontological Field Assessment for the Moeding Solar Grid Connection, North West Province.
- Butler, E., 2019. Recommended Exemption from further Palaeontological studies for the Proposed Agricultural Development on Farms 1763, 2372 And 2363, Kakamas South Settlement, Kai! Garib Municipality, Mgcawu District Municipality, Northern Cape Province.
- Butler, E., 2019. Recommended Exemption from further Palaeontological studies: of Proposed Agricultural Development, Plot 1178, Kakamas South Settlement, Kai! Garib Municipality
- Butler, E., 2019. Palaeontological Desktop Assessment for the Proposed Waste Rock Dump Project at Tshipi Borwa Mine, near Hotazel, Northern Cape Province:
- Butler, E., 2019. Palaeontological Exemption Letter for the proposed DMS Upgrade Project at the Sishen Mine, Gamagara Local Municipality, Northern Cape Province
- Butler, E., 2019. Palaeontological Desktop Assessment of the proposed Integrated Environmental Authorisation process for the proposed Der Brochen Amendment project, near Groblershoop, Limpopo



- Butler, E., 2019. Palaeontological Desktop Assessment of the proposed updated Environmental Management Programme (EMPr) for the Assmang (Pty) Ltd Black Rock Mining Operations, Hotazel, Northern Cape
- Butler, E., 2019. Palaeontological Desktop Assessment of the proposed Kriel Power Station Lime Plant Upgrade, Mpumalanga Province
- Butler, E., 2019. Palaeontological Impact Assessment for the proposed Kangala Extension Project Near Delmas, Mpumalanga Province.
- Butler, E., 2019. Palaeontological Desktop Assessment for the proposed construction of an iron/steel smelter at the Botshabelo Industrial area within the Mangaung Metropolitan Municipality, Free State Province.
- Butler, E., 2019. Recommended Exemption from further Palaeontological studies for the proposed agricultural development on farms 1763, 2372 and 2363, Kakamas South settlement, Kai! Garib Municipality, Mgcawu District Municipality, Northern Cape Province.
- Butler, E., 2019. Recommended Exemption from further Palaeontological Studies for Proposed formalisation of Gamakor and Noodkamp low-cost Housing Development, Keimoes, Gordonia Rd, Kai !Garib Local Municipality, ZF Mgcawu District Municipality, Northern Cape Province.
- Butler, E., 2019. Recommended Exemption from further Palaeontological Studies for proposed formalisation of Blaauwskop Low-Cost Housing Development, Kenhardt Road, Kai !Garib Local Municipality, ZF Mgcawu District Municipality, Northern Cape Province.
- Butler, E., 2019. Palaeontological Desktop Assessment of the proposed mining permit application for the removal of diamonds alluvial and diamonds kimberlite near Windsorton on a certain portion of Farm Zoelen's Laagte 158, Registration Division: Barkly Wes, Northern Cape Province.
- Butler, E., 2019. Palaeontological Desktop Assessment of the proposed Vedanta Housing Development, Pella Mission 39, Khâi-Ma Local Municipality, Namakwa District Municipality, Northern Cape.
- Butler, E., 2019. Palaeontological Desktop Assessment for The Proposed 920 KWP Groenheuwel Solar Plant Near Augrabies, Northern Cape Province
- Butler, E., 2019. Palaeontological Desktop Assessment for the establishment of a Super Fines Storage Facility at Amandelbult Mine, Near Thabazimbi, Limpopo Province
- Butler, E., 2019. Palaeontological Impact Assessment for the proposed Sace Lifex Project, Near Emalahleni, Mpumalanga Province
- Butler, E., 2019. Palaeontological Desktop Assessment for the proposed Rehau Fort Jackson Warehouse Extension, East London
- Butler, E., 2019. Palaeontological Desktop Assessment for the proposed Environmental Authorisation Amendment for moving 3 Km of the Merensky-Kameni 132KV Powerline
- Butler, E., 2019. Palaeontological Impact Assessment for the proposed Umsobomvu Solar PV Energy Facilities, Northern and Eastern Cape
- Butler, E., 2019. Palaeontological Desktop Assessment for six proposed Black Mountain Mining Prospecting Right Applications, without Bulk Sampling, in the Northern Cape.



- Butler, E., 2019. Palaeontological field Assessment of the Filling Station (Rietvlei Extension 6) on the Remaining Portion of Portion 1 of the Farm Witkoppies 393JR east of the Rietvleidam Nature Reserve, City of Tshwane, Gauteng
- Butler, E., 2019. Palaeontological Desktop Assessment of The Proposed Upgrade of The Vaal Gamagara Regional Water Supply Scheme: Phase 2 And Groundwater Abstraction
- Butler, E., 2019. Palaeontological Desktop Assessment of The Expansion of The Jan Kempdorp Cemetery on Portion 43 Of Farm Guldenskat 36-Hn, Northern Cape Province
- Butler, E., 2019. Palaeontological Desktop Assessment of the Proposed Residential Development on Portion 42 Of Farm Geldunskat No 36 In Jan Kempdorp, Phokwane Local Municipality, Northern Cape Province
- Butler, E., 2019. Palaeontological Impact Assessment of the proposed new Township Development, Lethabo Park, on Remainder of Farm Roodepan No 70, Erf 17725 And Erf 15089, Roodepan Kimberley, Sol Plaatjies Local Municipality, Frances Baard District Municipality, Northern Cape
- Butler, E., 2019. Palaeontological Protocol for Finds for the proposed 16m WH Battery Storage System in Steinkopf, Northern Cape Province
- Butler, E., 2019. Palaeontological Exemption Letter of the proposed 4.5WH Battery Storage System near Midway-Pofadder, Northern Cape Province
- Butler, E., 2019. Palaeontological Exemption Letter of the proposed 2.5ml Process Water Reservoir at Gloria Mine, Black Rock, Hotazel, Northern Cape
- Butler, E., 2019. Palaeontological Desktop Assessment for the Establishment of a Super Fines Storage Facility at Gloria Mine, Black Rock Mine Operations, Hotazel, Northern Cape:
- Butler, E., 2019. Palaeontological Desktop Assessment for the Proposed New Railway Bridge, and Rail Line Between Hotazel and the Gloria Mine, Northern Cape Province
- Butler, E., 2019. Palaeontological Exemption Letter of The Proposed Mixed Use Commercial Development on Portion 17 of Farm Boegoeberg Settlement Number 48, !Kheis Local Municipality in The Northern Cape Province. Banzai Environmental (Pty) Ltd, Bloemfontein.
- Butler, E., 2019. Palaeontological Desktop Assessment of the Proposed Diamond Mining Permit Application Near Kimberley, Sol Plaatjies Municipality, Northern Cape Province. Banzai Environmental (Pty) Ltd, Bloemfontein.
- Butler, E., 2019. Palaeontological Desktop Assessment of the Proposed Diamonds (Alluvial, General & In Kimberlite) Prospecting Right Application near Postmasburg, Registration Division; Hay, Northern Cape Province. Banzai Environmental (Pty) Ltd, Bloemfontein.
- Butler, E., 2019. Palaeontological Desktop Assessment of the proposed diamonds (alluvial, general & in kimberlite) prospecting right application near Kimberley, Northern Cape Province. Banzai Environmental (Pty) Ltd, Bloemfontein.
- Butler, E., 2019. Palaeontological Phase 1 Impact Assessment of the proposed upgrade of the Vaal Gamagara regional water supply scheme: Phase 2 and groundwater abstraction. Banzai Environmental (Pty) Ltd, Bloemfontein.



- Butler, E., 2019. Palaeontological Desktop Assessment of the proposed seepage interception drains at Duvha Power Station, Emalahleni Municipality, Mpumalanga Province. Banzai Environmental (Pty) Ltd, Bloemfontein.
- Butler, E., 2019. Palaeontological Desktop Assessment letter for the Proposed PV Solar Facility at the Heineken Sedibeng Brewery, near Vereeniging, Gauteng. Banzai Environmental (Pty) Ltd, Bloemfontein.
- Butler, E., 2019. Palaeontological Phase 1 Assessment for the Proposed PV Solar Facility at the Heineken Sedibeng Brewery, near Vereeniging, Gauteng. Banzai Environmental (Pty) Ltd, Bloemfontein.
- Butler, E., 2019. Palaeontological field Assessment for the Proposed Upgrade of the Kolomela Mining Operations, Tsantsabane Local Municipality, Siyanda District Municipality, Northern Cape Province, Northern Cape. Banzai Environmental (Pty) Ltd, Bloemfontein.
- Butler, E., 2019. Palaeontological Desktop Assessment of the proposed feldspar prospecting rights and mining application on portion 4 and 5 of the farm Rozynen 104, Kakamas South, Kai! Garib Municipality, Zf Mgcawu District Municipality, Northern Cape. Banzai Environmental (Pty) Ltd, Bloemfontein.
- Butler, E., 2019. Palaeontological Phase 1 Field Assessment of the proposed Summerpride Residential Development and Associated Infrastructure on Erf 107, Buffalo City Municipality, East London. Banzai Environmental (Pty) Ltd, Bloemfontein.
- Butler, E., 2019. Palaeontological Desktop Impact Assessment for the proposed re-commission of the Old Balgay Colliery near Dundee, KwaZulu Natal.
- Butler, E., 2019. Palaeontological Phase 1 Impact Assessment for the Proposed Re-Commission of the Old Balgay Colliery near Dundee, KwaZulu Natal. Banzai Environmental (Pty) Ltd, Bloemfontein.
- Butler, E., 2019. Palaeontological Desktop Assessment for the Proposed Environmental Authorisation and Amendment Processes for Elandsfontein Colliery. Banzai Environmental (Pty) Ltd, Bloemfontein.
- Butler, E., 2019. Palaeontological Impact Assessment and Protocol for Finds of a Proposed New Quarry on Portion 9 (of 6) of the farm Mimosa Glen 885, Bloemfontein, Free State Province. Banzai Environmental (Pty) Ltd, Bloemfontein.
- Butler, E., 2019. Palaeontological Impact Assessment and Protocol for Finds of a proposed development on Portion 9 and 10 of the Farm Mimosa Glen 885, Bloemfontein, Free State Province. Banzai Environmental (Pty) Ltd, Bloemfontein.
- Butler, E., 2019. Palaeontological Exemption Letter for the proposed residential development on the Remainder of Portion 1 of the Farm Strathearn 2154 in the Magisterial District of Bloemfontein, Free State. Banzai Environmental (Pty) Ltd, Bloemfontein.
- Butler, E., 2019. Palaeontological Field Assessment for the Proposed Nigel Gas Transmission Pipeline Project in the Nigel Area of the Ekurhuleni Metropolitan Municipality, Gauteng Province. Banzai Environmental (Pty) Ltd, Bloemfontein.



- Butler, E., 2019. Palaeontological Desktop Assessment for five Proposed Black Mountain Mining Prospecting Right Applications, Without Bulk Sampling, in the Northern Cape. Banzai Environmental (Pty) Ltd, Bloemfontein.
- Butler, E. 2019. Palaeontological Desktop Assessment for the Proposed Environmental Authorisation and an Integrated Water Use Licence Application for the Reclamation of the Marievale Tailings Storage Facilities, Ekurhuleni Metropolitan Municipality - Gauteng Province. Banzai Environmental (Pty) Ltd, Bloemfontein.
- Butler, E., 2019. Palaeontological Impact Assessment for the Proposed Sace Lifex Project, near Emalahleni, Mpumalanga Province. Banzai Environmental (Pty) Ltd, Bloemfontein.
- Butler, E., 2019. Palaeontological Desktop Assessment for the proposed Golfview Colliery near Ermelo, Msukaligwa Local Municipality, Mpumalanga Province
- Butler, E., 2019. Palaeontological Desktop Assessment for the Proposed Kangra Maquasa Block C Mining development near Piet Retief, in the Mkhondo Local Municipality within the Gert Sibande District Municipality. Banzai Environmental (Pty) Ltd, Bloemfontein.
- Butler, E., 2019. Palaeontological Desktop Assessment for the Proposed Amendment of the Kusipongo Underground and Opencast Coal Mine in Support of an Environmental Authorization and Waste Management License Application. Banzai Environmental (Pty) Ltd, Bloemfontein.
- Butler, E., 2019. Palaeontological Exemption Letter of the Proposed Mamatwan Mine Section 24g Rectification Application, near Hotazel, Northern Cape Province. Banzai Environmental (Pty) Ltd, Bloemfontein.
- Butler, E., 2020. Palaeontological Field Assessment for the Proposed Environmental Authorisation and Amendment Processes for Elandsfontein Colliery. Banzai Environmental (Pty) Ltd, Bloemfontein.
- Butler, E., 2020. Palaeontological Desktop Assessment for the Proposed Extension of the South African Nuclear Energy Corporation (Necsa) Pipe Storage Facility, Madibeng Local Municipality, North West Province. Banzai Environmental (Pty) Ltd, Bloemfontein.
- Butler, E., 2020. Palaeontological Field Assessment for the Proposed Piggery on Portion 46 of the Farm Brakkefontien 416, Within the Nelson Mandela Bay Municipality, Eastern Cape. Banzai Environmental (Pty) Ltd, Bloemfontein.
- Butler, E., 2020. Palaeontological field Assessment for the proposed Rietfontein Housing Project as part of the Rapid Land Release Programme, Gauteng Province Department of Human Settlements, City of Johannesburg Metropolitan Municipality. Banzai Environmental (Pty) Ltd, Bloemfontein.
- Butler, E., 2020. Palaeontological Desktop Assessment for the Proposed Choje Wind Farm between Grahamstown and Somerset East, Eastern Cape. Banzai Environmental (Pty) Ltd, Bloemfontein.
- Butler, E., 2020. Palaeontological Desktop Assessment of the Proposed Prospecting Right Application for the Prospecting of Diamonds (Alluvial, General & In Kimberlite), Combined with A Waste License Application, Registration Division: Gordonia and Kenhardt, Northern Cape Province. Banzai Environmental (Pty) Ltd, Bloemfontein.



Butler, E., 2020. Palaeontological Impact Assessment for the Proposed Clayville Truck Yard, Ablution Blocks and Wash Bay to be Situated on Portion 55 And 56 Of Erf 1015, Clayville X11, Ekurhuleni Metropolitan Municipality, Gauteng Province. Banzai Environmental (Pty) Ltd, Bloemfontein.

Butler, E., 2020. Palaeontological Desktop Assessment for the Proposed Hartebeesthoek Residential Development. Banzai Environmental (Pty) Ltd, Bloemfontein.

Butler, E., 2020. Palaeontological Desktop Assessment for the Proposed Mooiplaats Educational Facility, Gauteng Province. Banzai Environmental (Pty) Ltd, Bloemfontein.

Butler, E., 2020. Palaeontological Impact Assessment for the Proposed Monument Park Student Housing Establishment. Banzai Environmental (Pty) Ltd, Bloemfontein.

Butler, E., 2020. Palaeontological Field Assessment for the Proposed Standerton X10 Residential and Mixed-Use Developments, Lekwa Local Municipality Standerton, Mpumalanga Province. Banzai Environmental (Pty) Ltd, Bloemfontein.

Butler, E., 2020. Palaeontological Field Assessment for the Rezoning and Subdivision of Portion 6 Of Farm 743, East London. Banzai Environmental (Pty) Ltd, Bloemfontein. Banzai Environmental (Pty) Ltd, Bloemfontein.

Butler, E., 2020. Palaeontological Field Assessment for the Proposed Matla Power Station Reverse Osmosis Plant, Mpumalanga Province. Banzai Environmental (Pty) Ltd, Bloemfontein.

Butler, E., 2020. Palaeontological Desktop Assessment of the Proposed Prospecting Right Application Without Bulk Sampling for the Prospecting of Diamonds Alluvial near Bloemhof on Portion 3 (Portion 1) of the Farm Boschpan 339, the Remaining Extent of Portion 8 (Portion 1), Portion 9 (Portion 1) and Portion 10 (Portion 1) and Portion 17 (Portion 1) of the Farm Panfontein 270, Registration Division: Ho, North West Province. Banzai Environmental (Pty) Ltd, Bloemfontein.

Butler, E., 2020. Palaeontological Desktop Assessment of the Proposed Prospecting Right Application Combined with a Waste Licence Application for the Prospecting of Diamonds Alluvial, Diamonds General and Diamonds near Wolmaransstad on the Remaining Extent, Portion 7 and Portion 8 Of Farm Rooibult 152, Registration Division: HO, North West Province. Banzai Environmental (Pty) Ltd, Bloemfontein.

Butler, E., 2020. Palaeontological Desktop Assessment of the Proposed Prospecting Right Application With Bulk Sampling combined with a Waste Licence Application for the Prospecting of Diamonds Alluvial (Da), Diamonds General (D), Diamonds (Dia) and Diamonds In Kimberlite (Dk) near Prieska On Portion 7, a certain Portion of the Remaining Extent of Portion 9 (Wouter), Portion 11 (De Hoek), Portion 14 (Stofdraai) (Portion of Portion 4), the Remaining Extent of Portion 16 (Portion Of Portion 9) (Wouter) and the Remaining Extent of Portion 18 (Portion of Portion 10) of the Farm Lanyon Vale 376, Registration Division: Hay, Northern Cape. Banzai Environmental (Pty) Ltd, Bloemfontein.

Butler, E., 2020. Palaeontological Desktop Assessment of the Proposed Prospecting Right Area and Mining Permit Area near Ritchie on the Remaining Extent of Portion 3 (Anna's Hoop) of the Farm Zandheuvell 144, Registration Division: Kimberley, Northern Cape Province. Banzai Environmental (Pty) Ltd, Bloemfontein.



Butler, E., 2020. Palaeontological Desktop Assessment of the Proposed Okapi Diamonds (Pty) Ltd Mining Right of Diamonds Alluvial (Da) & Diamonds General (D) Combined with a Waste Licence Application on the Remaining Extent of Portion 9 (Wouter) of the Farm Lanyon Vale 376; Registration Division: Hay; Northern Cape Province. Banzai Environmental (Pty) Ltd, Bloemfontein.

Butler, E., 2020. Palaeontological Field Assessment of the Proposed Prospecting Right Application for the Prospecting of Diamonds (Alluvial & General) between Douglas and Prieska on Portion 12, Remaining Extent of Portion 29 (Portion of Portion 13) and Portion 31 (Portion of Portion 29) on the Farm Reads Drift 74, Registration Division; Herbert, Northern Cape Province. Banzai Environmental (Pty) Ltd, Bloemfontein.

Butler, E., 2020. Palaeontological Desktop Assessment for the Proposed Mining Permit Application Combined with a Waste License Application for the Mining of Diamonds (Alluvial) Near Schweitzer-Reneke on a certain Portion of Portion 12 (Ptn of Ptn 7) of the Farm Doornhoek 165, Registration Division: HO, North West Province. Banzai Environmental (Pty) Ltd, Bloemfontein.

Butler, E., 2020. Palaeontological Desktop Assessment for Black Mountain Koa South Prospecting Right Application, Without Bulk Sampling, in the Northern Cape. Banzai Environmental (Pty) Ltd, Bloemfontein.

Butler, E., 2020. Palaeontological Impact Assessment of the Proposed AA Bakery Expansion, Sedibeng District Municipality, Gauteng. Banzai Environmental (Pty) Ltd, Bloemfontein.

Butler, E., 2020. Palaeontological Desktop Assessment for the Proposed Boegoeberg Township Expansion, !Kheis Local Municipality, ZF Mgcawu District Municipality, Northern Cape Province. Banzai Environmental (Pty) Ltd, Bloemfontein.

Butler, E., 2020. Palaeontological Desktop Assessment for the Proposed Gariiep Township Expansion, !Kheis Local Municipality, ZF Mgcawu District Municipality, Northern Cape Province. Banzai Environmental (Pty) Ltd, Bloemfontein.

Butler, E., 2020. Palaeontological Desktop Assessment for the Proposed Groblershoop Township Expansion, !Kheis Local Municipality, Zf Mgcawu District Municipality, Northern Cape Province. Banzai Environmental (Pty) Ltd, Bloemfontein.

Butler, E., 2020. Palaeontological Desktop Assessment for the Proposed Grootdrink Township Expansion, !Kheis Local Municipality, ZF Mgcawu District Municipality, Northern Cape Province. Banzai Environmental (Pty) Ltd, Bloemfontein.

Butler, E., 2020. Palaeontological Exemption Letter for the Proposed Opwag Township Expansion, !Kheis Local Municipality, ZF Mgcawu District Municipality, Northern Cape Province. Banzai Environmental (Pty) Ltd, Bloemfontein.

Butler, E., 2020. Palaeontological Exemption Letter for the Proposed Topline Township Expansion, !Kheis Local Municipality, ZF Mgcawu District Municipality, Northern Cape Province. Banzai Environmental (Pty) Ltd, Bloemfontein.

Butler, E., 2020. Palaeontological Desktop Assessment for the Proposed Wegdraai Township Expansion, !Kheis Local Municipality, Zf Mgcawu District Municipality, Northern Cape Province. Banzai Environmental (Pty) Ltd, Bloemfontein.





- 1.1 Butler, E., 2020. Palaeontological field Assessment for the Proposed Establishment of an Emulsion Plant on Erf 1559, Hardustria, Harrismith, Free State. Banzai Environmental (Pty) Ltd, Bloemfontein.
- Butler. 2020. Part 2 Environmental Authorisation (EA) Amendment Process for the Kudusberg Wind Energy Facility (WEF) near Sutherland, Western and Northern Cape Provinces- Palaeontological Impact Assessment. Banzai Environmental (Pty) Ltd, Bloemfontein.
- Butler, E., 2020. Palaeontological Desktop Assessment Proposed for the Construction and Operation of the Battery Energy Storage System (BESS) and Associated Infrastructure and inclusion of Additional Listed Activities for the Authorised Droogfontein 3 Solar Photovoltaic (PV) Energy Facility Located near Kimberley in the Sol Plaatje Local Municipality, Francis Baard District Municipality, in the Northern Cape Province of South Africa. Banzai Environmental (Pty) Ltd, Bloemfontein.
- Butler, E., 2020. Palaeontological Impact Assessment for the Proposed Development of a Cluster of Renewable Energy Facilities between Somerset East and Grahamstown in the Eastern Cape. Banzai Environmental (Pty) Ltd, Bloemfontein.
- Butler, E., 2021. Palaeontological Desktop Assessment for the Proposed Amaoti Secondary School, Pinetown, eThekweni Metropolitan Municipality KwaZulu Natal. Banzai Environmental (Pty) Ltd, Bloemfontein.
- Butler, E., 2021. Palaeontological Impact Assessment for the Proposed an Inland Diesel Depot, Transportation Pipeline and Associated Infrastructure on Portion 5 of the Farm Franshoek No. 1861, Swinburne, Free State Province. Banzai Environmental (Pty) Ltd, Bloemfontein.
- Butler, E., 2021. Palaeontological Impact Assessment for the proposed erosion control gabion installation at Alpine Heath Resort on the farm Akkerman No 5679 in the Bergville district Kwazulu-Natal. Banzai Environmental (Pty) Ltd, Bloemfontein.
- Butler, E., 2021. Palaeontological Impact Assessment for the proposed Doornkloof Residential development on portion 712 of the farm Doornkloof 391 Jr, City of Tshwane Metropolitan Municipality in Gauteng, South Africa. Banzai Environmental (Pty) Ltd, Bloemfontein.
- Butler, E., 2021. Palaeontological Desktop Assessment for the Proposed Expansion of the Square *Kilometre* Array (SKA) Meerkat Project, on the Farms Mey's Dam RE/68, Brak Puts RE /66, Swartfontein RE /496 & Swartfontein 2/496, in the Kareeberg Local Municipality, Pixley Ka Seme District Municipality, and the Farms Los Berg 1/73 & Groot Paardekloof RE /74, in the Karoo Hoogland Local Municipality, Namakwa District Municipality, Northern Cape Province. Banzai Environmental (Pty) Ltd, Bloemfontein.
- Butler, E., 2021. Palaeontological Desktop Assessment for De Beers Consolidated Mines: Proposed Drilling on Portion 6 of Scholtzfontein 165 and Farm Arnotsdale 175, Herbert District in the Northern Cape. Banzai Environmental (Pty) Ltd, Bloemfontein.
- Butler, E., 2021. Palaeontological Desktop Assessment for De Beers Consolidated Mines: Proposed Drilling on the Remaining Extent of Biessie Laagte 96, and Portion 2 and 6 of Aasvogel Pan 141, Near Hopetown in the Northern Cape. Banzai Environmental (Pty) Ltd, Bloemfontein.
- Butler, E., 2021. Palaeontological Desktop Assessment for De Beers Consolidated Mines: Proposed Drilling in the North West Province: on Portions 7 (RE) (of Portion 3), 11, 12 (of Portion 3), 34 (of Portion



30), 35 (of Portion 7) of the Farm Holfontein 147 IO and Portions 1, 2 and the RE) of the Farm Kareeboschbult 76 Ip and Portions 1, 2, 4, 5, 6, (of Portion 3), 7 (of Portion 3), 13, 14, and the Re of the farm Oppaslaagte 100IP and portions 25 (of Portion 24) and 30 of the farm Slypsteen 102 IP. Banzai Environmental (Pty) Ltd, Bloemfontein.

Butler, E., 2021. Palaeontological Desktop Assessment for the Proposed Expansion of the Cavalier Abattoir on farm Oog Van Boekenhoutskloof of Tweefontein 288 JR, near Cullinan, City of Tshwane Metropolitan Municipality, Gauteng. Banzai Environmental (Pty) Ltd, Bloemfontein.

Butler, E., 2021. Palaeontological Impact Assessment for the Proposed Doornkloof Residential Development on Portion 712 of the Farm Doornkloof 391 JR, City of Tshwane Metropolitan Municipality in Gauteng, South Africa. Banzai Environmental (Pty) Ltd, Bloemfontein.

Butler, E., 2021. Palaeontological Desktop Assessment for the proposed High Density Social Housing Development on part of the Remainder of Portion 171 and part of Portion 306 of the farm Derdepoort 326 JR, City of Tshwane. Banzai Environmental (Pty) Ltd, Bloemfontein.

Butler, E., 2021. Palaeontological Desktop Assessment for the proposed Red Rock Mountain Farm activities on Portions 2, 3 and 11 of the Farm Buffelskloof 22, near Calitzdorp in the Western Cape. Banzai Environmental (Pty) Ltd, Bloemfontein.

Butler, E., 2021. Palaeontological Desktop Assessment for the proposed Mixed-use Development on a Part of Remainder of Portion 171 and Portion 306 of the farm Derdepoort 326 JR, City of Tshwane. Banzai Environmental (Pty) Ltd, Bloemfontein.

Butler, E., 2021. Palaeontological Impact Assessment for the Proposed Realignment of the D 2809 Provincial Road as well as the Mining Right Application for the Glisa and Paardeplaats Sections of the NBC Colliery (NBC) near Belfast (eMakhazeni), eMakhazeni Local Municipality, Nkangala District Municipality, Mpumalanga Province. Banzai Environmental (Pty) Ltd, Bloemfontein.

Butler, E., 2021. Palaeontological Desktop Assessment for the proposed construction of Whittlesea Cemetery within Enoch Mjijima Local Municipality area, Eastern Cape. Banzai Environmental (Pty) Ltd, Bloemfontein.

Butler, E., 2021. Palaeontological Impact Assessment for the establishment of a mixed-use development on Portion 0 the of Erf 700, Despatch, Nelson Mandela Bay Municipality, Eastern Cape. Banzai Environmental (Pty) Ltd, Bloemfontein.

Butler, E., 2021. Palaeontological Desktop Assessment for the proposed East Orchards Poultry Farm, Delmas/Botleng Transitional Local Council, Mpumalanga. Banzai Environmental (Pty) Ltd, Bloemfontein.

Butler, E., 2021. Palaeontological Impact Assessment for the proposed East Orchards Poultry Farm, Delmas/Botleng Transitional Local Council, Mpumalanga. Banzai Environmental (Pty) Ltd, Bloemfontein.

Butler, E., 2021. Palaeontological Desktop Assessment to assess the proposed Gariep Road upgrade near Groblershoop, Northern Cape Province. Banzai Environmental (Pty) Ltd, Bloemfontein.



Butler, E., 2021. Palaeontological Impact Assessment for the Ngwedi Solar Plant which forms part of the authorised Paleso Solar Powerplant near Viljoenskroon in the Free State. Banzai Environmental (Pty) Ltd, Bloemfontein.

Butler, E., 2021. Palaeontological Impact Assessment for the Noko Solar Power Plant and power line which forms part of the authorised Paleso Solar Powerplant near Orkney in the North West. Banzai Environmental (Pty) Ltd, Bloemfontein.

Butler, E., 2021. Palaeontological Impact Assessment for the Proposed Power Line as part of the Paleso Solar Power Plant near Viljoenskroon in the Free State. Banzai Environmental (Pty) Ltd, Bloemfontein.

Butler, E., 2021. Palaeontological Impact Assessment for the Thakadu Solar Plant which forms part of the authorised Paleso Solar Powerplant near Viljoenskroon in the Free State. Banzai Environmental (Pty) Ltd, Bloemfontein.

Butler, E., 2020. Palaeontological Desktop Assessment for the proposed Farming Expansions on Portions 50 of the Farm Rooipoort 555 JR, Portion 34 of the Farm Rooipoort 555 JR, Portions 20 and 49 of the Farm Rooipoort 555 JR and Portion 0(RE) of the Farm Oudou Boerdery 626 JR, Tshwane Metropolitan Municipality, Gauteng Province. Banzai Environmental (Pty) Ltd, Bloemfontein.

Butler, E., 2020. Palaeontological Desktop Assessment for the proposed Saselamani CBD on the Remainder of Tshikundu's Location 262 MT, and the Remainder of Portion 1 of Tshikundu's Location 262 MT, Collins Chabane Local Municipality, Limpopo Province. Banzai Environmental (Pty) Ltd, Bloemfontein.

Butler, E., 2021. Palaeontological Impact Assessment for the proposed expansions of the existing Molare Piggery infrastructure and related activities on Portion 0(Re) of the farm Arendsfontein 464 JS, Portion 0(Re) of the farm Wanhoop 443 JS, Portion 0(Re) of the farm Eikeboom 476 JS and Portions 2 & 7 of the farm Klipbank 467 JS within the jurisdiction of the Steve Tshwete Local Municipality, Mpumalanga Province. Banzai Environmental (Pty) Ltd, Bloemfontein.

Butler, E., 2021. Palaeontological Desktop Assessment for the proposed Nchwaning Rail Balloon Turn Outs at Black Rock Mine Operations (BRMO) near Hotazel in the John Taolo Gaetsewe District Municipality in the Northern Cape. Banzai Environmental (Pty) Ltd, Bloemfontein.

Butler, E., 2021. Palaeontological Desktop Assessment for the proposed Black Rock Mining Operations (BRMO) new rail loop and stacker reclaimer Project at Gloria Mine near Hotazel in the Northern Cape. Banzai Environmental (Pty) Ltd, Bloemfontein.

Butler, E., 2020. Palaeontological Desktop Assessment for the proposed Nchwaning Rail Balloon Turn Outs at Black Rock Mine Operations (BRMO) near Hotazel in the John Taolo Gaetsewe District Municipality in the Northern Cape.

Butler, E., 2021. Palaeontological Impact Assessment for the proposed utilization of one Borrow Pit for the planned Clarkebury DR08034 Road Upgrade, Engcobo Local Municipality, Eastern Cape. Banzai Environmental (Pty) Ltd, Bloemfontein.

Butler, E., 2021. Palaeontological Desktop Assessment for the proposed Kappies Kareeboom Prospecting Project on Portion 1 and the Remainder of the farm Kappies Kareeboom 540, the



Remainder of Farm 544, Portion 5 of farm 534 and Portion 1 of the farm Putsfontein 616, ZF Mgcawu District Municipality, Northern Cape Province. Banzai Environmental (Pty) Ltd, Bloemfontein.

Butler, E., 2021. Palaeontological Desktop Assessment for the proposed Kameel Fontein Prospecting Project on the Remainder of the farm Kameel Fontein 490, a portion of the farm Strydfontein 614 and the farm Soetfontein 606, ZF Mgcawu District Municipality, Northern Cape Province. Banzai Environmental (Pty) Ltd, Bloemfontein.

Butler, E., 2021. Palaeontological Desktop Assessment for the proposed Lewis Prospecting Project on Portions of the Farms Lewis 535, Spence 537, Wright 538, Symthe 566, Bredenkamp 567, Brooks 568, Beaumont 569 and Murray 570, John Taolo Gaetsewe District Municipality in the Northern Cape Province. Banzai Environmental (Pty) Ltd, Bloemfontein.

Butler, E., 2021. Palaeontological Desktop Assessment for the Construction of the Ganspan Pering 132kV Powerline, Phokwane Local Municipality, Frances Baard District Municipality in the Northern Cape. Banzai Environmental (Pty) Ltd, Bloemfontein.

Butler, E., 2021. Palaeontological Desktop Assessment for the Longlands Prospecting Project on a Portion of the farm Longlands 350, Frances Baard District Municipality, Northern Cape Province. Banzai Environmental (Pty) Ltd, Bloemfontein.

Butler, E., 2021. Palaeontological Impact Assessment for the proposed development of 177 new units in the northern section of Mpongo Park in the Eastern Cape. Banzai Environmental (Pty) Ltd, Bloemfontein.

Butler, E., 2021. Palaeontological Desktop Assessment for the proposed Qhumanco Irrigation Project, Chris Hani District Municipality Eastern Cape. Banzai Environmental (Pty) Ltd, Bloemfontein.

Butler, E., 2021. Palaeontological Desktop Assessment for the proposed Raphuti Settlement Project on Portions of the Farm Weikrans 539KQ in the Waterberg District Municipality of the Limpopo Province. Banzai Environmental (Pty) Ltd, Bloemfontein.

Butler, E., 2021. Palaeontological Impact Assessment for the Senqu Rural Project, Joe Gqabi District Municipality, Senqu Local Municipality, in the Eastern Cape Province. Banzai Environmental (Pty) Ltd, Bloemfontein.

Butler, E., 2021. Palaeontological Impact Assessment for the proposed new Township development on portion of the farm Klipfontein 716 and farm Ceres 626 in Bloemfontein, Mangaung Metropolitan Municipality, Free State. Banzai Environmental (Pty) Ltd, Bloemfontein.

Butler, E., 2021. Palaeontological Desktop Assessment for the ECDOT Borrow Pits and WULA near Sterkspruit, Joe Gqabi District Municipality in the Eastern Cape Province. Banzai Environmental (Pty) Ltd, Bloemfontein.

Butler, E., 2021. Palaeontological Desktop Assessment for the proposed SANRAL Stone Crescent Embankment Stabilisation Works along the N2 on the farm Zyfer Fonteyn 253 (Portion 0, 11 and 12RE) and Palmiet Rivier 305 (Portion 34, 36) near Grahamstown in the Eastern Cape. Banzai Environmental (Pty) Ltd, Bloemfontein.

Butler, E., 2021. Palaeontological Impact Assessment for the Klein Rooipoort Trust Citrus Development, in the Eastern Cape. Banzai Environmental (Pty) Ltd, Bloemfontein.



Butler, E., 2021. Palaeontological Impact Assessment for the proposed Victoria West water augmentation project in the Northern Cape. Banzai Environmental (Pty) Ltd, Bloemfontein.

Butler, E., 2021. Palaeontological Desktop Assessment for the proposed Campbell Sewer, Internal Reticulation, Outfall Sewer Line and Oxidation Ponds, located on ERF 1, Siyancuma Local Municipality in the Northern Cape. Banzai Environmental (Pty) Ltd, Bloemfontein.

Butler, E., 2021. Palaeontological Desktop Assessment for the proposed Development and Upgrades within the Great Fish River Nature Reserve, Eastern Cape Province. Banzai Environmental (Pty) Ltd, Bloemfontein.

Butler, E., 2021. Palaeontological Desktop Assessment for proposed Parsons Power Park a portion of Erf 1. within the Nelson Mandela Bay Municipality in the Eastern Cape. Banzai Environmental (Pty) Ltd, Bloemfontein.

Butler, E., 2021. Palaeontological Desktop Assessment for the proposed expansion of the farming operations on part of portions 7 and 8 of farm Boerboonkraal 353 in the Greater Tubatse Local Municipality of Sekhukhune District, Limpopo Province. Banzai Environmental (Pty) Ltd, Bloemfontein.

Butler, E., 2021. Palaeontological Desktop Assessment to assess the proposed low-level pedestrian bridge, in Heilbron, Free State. Banzai Environmental (Pty) Ltd, Bloemfontein.

Butler, E., 2021. Palaeontological Desktop Assessment to assess the proposed township developments in Hertzogville, Malebogo, in Heilbron, Free State. Banzai Environmental (Pty) Ltd, Bloemfontein.

Butler, E., 2021. Palaeontological Impact Assessment for the proposed construction of Malangazana Bridge on Farm No.64 Nkwenkwana, Engcobo Local Municipality, Eastern Cape. Banzai Environmental (Pty) Ltd, Bloemfontein.

Butler, E., 2021. Palaeontological Impact Assessment to assess the proposed Construction of Middelburg Integrated Transport Control Centre on Portion 14 of Farm 81 Division of Middelburg, Chris Hani District Municipality in the Eastern Cape. Banzai Environmental (Pty) Ltd, Bloemfontein.

Butler, E., 2021. Palaeontological Desktop Assessment for the Witteberge Sand Mine on the remainder of farm Elandskrag Plaas 269 located in the Magisterial District of Laingsburg and Central Karoo District Municipality in the Western Cape. Banzai Environmental (Pty) Ltd, Bloemfontein.

Butler, E., 2021. Palaeontological Impact Assessment (PIA) to assess the proposed Agrizone 2, Dube Trade Port in KwaZulu Natal Province. Banzai Environmental (Pty) Ltd, Bloemfontein.

Butler, E., 2021. Palaeontological Desktop Assessment assessing the proposed Prospecting Right application without bulk sampling for the prospecting of Chrome ore and platinum group metals on the Remaining Extent of the farm Doornspruit 106, Registration Division: HO; North West Province. Banzai Environmental (Pty) Ltd, Bloemfontein.

Butler, E., 2022. Palaeontological Desktop Assessment for the proposed Ennerdale Extension 2 Township Establishment on the Undeveloped Part of Portion 134 of the Farm Roodepoort 302IQ, City of Johannesburg Metropolitan Municipality, Gauteng Province. Banzai Environmental (Pty) Ltd, Bloemfontein.



Butler, E., 2022. Palaeontological Desktop Assessment for the Construction of the Eskom Mesong 400kV Loop-In Loop-Out Project, Ekurhuleni Municipality, Gauteng Province. Banzai Environmental (Pty) Ltd, Bloemfontein.

Butler, E., 2022. Palaeontological Desktop Assessment for the Proposed Vinci Prospecting Right Application on the Remainder of the Farm Vinci 580, ZF Mgcawu District Municipality, in the Northern Cape Province, Banzai Environmental (Pty) Ltd, Bloemfontein.

Butler, E., 2022. Palaeontological Desktop Assessment for the proposed Farm 431 Mining Right Application (MRA), near Postmasburg, ZF Mgcawu District Municipality, in the Northern Cape Province. Banzai Environmental (Pty) Ltd, Bloemfontein.

Butler, E., 2022. Palaeontological Impact Assessment for the Leeuw Braakfontein Colliery Expansion Project (LBC) in the Amajuba District Municipality, KwaZulu-Natal. Banzai Environmental (Pty) Ltd, Bloemfontein.

Butler, E., 2022. Palaeontological Desktop Assessment for the proposed reclamation of the 5L23 TSF in Ekurhuleni, Gauteng Province. Banzai Environmental (Pty) Ltd, Bloemfontein.

Butler, E., 2022. Palaeontological Desktop Assessment for the Proposed Mogalakwena Mine Infrastructure Expansion (near Sekuruwe in the Mogalakwena Local Municipality, Limpopo Province). Banzai Environmental (Pty) Ltd, Bloemfontein.

Butler, E., 2022. Palaeontological Desktop Assessment for the proposed 10km Cuprum to Kronos Double Circuit 132kV Line and Associated Infrastructure in Copperton in the Northern Cape. Banzai Environmental (Pty) Ltd, Bloemfontein.

Butler, E., 2022. Palaeontological Impact Assessment for the proposed Hoekplaas WEF near Victoria West in the Northern Cape. Banzai Environmental (Pty) Ltd, Bloemfontein.

Butler, E., 2022. Palaeontological Desktop Assessment (PDA) assessing the proposed Prospecting Right Application without bulk sampling for the Prospecting of Diamonds Alluvial (DA), Diamonds General (D), Diamonds in Kimberlite (DK) & Diamonds (DIA) on the Remaining Extent of the Farm Goede Hoop 547, Remaining Extent of the Farm 548, Remaining Extent of Portion 2 and Portion 3 of the Farm Skeyfontein 536, Registration Division: Hay, Northern Cape Province. Banzai Environmental (Pty) Ltd, Bloemfontein.

Butler, E., 2022. Palaeontological Impact Assessment for the proposed extension of Duine Weg Road between Pellsrus and Marina Martinique as well as a Water Use Authorisation (WUA) for the project. Banzai Environmental (Pty) Ltd, Bloemfontein.

Butler, E., 2022. Proposed Mimosa Residential Development and Associated Infrastructure on Fairview Erven, in Gqeberha (Port Elizabeth), Nelson Mandela Bay Metropolitan Municipality, Eastern Cape Province. Banzai Environmental (Pty) Ltd, Bloemfontein.

Butler, E., 2022. Palaeontological Impact Assessment for the Witteberge Sand Mine on the remainder of farm Elandskrag Plaas 269 located in the Magisterial District of Laingsburg and Central Karoo District Municipality in the Western Cape. Banzai Environmental (Pty) Ltd, Bloemfontein.

Butler, E., 2022. Palaeontological Desktop Assessment to assess the Palaeontology for the Somkhele Anthracite Mine's Prospecting Right Application, on the Remainder of the Farm Reserve no 3 No



15822 within the uMkhanyakude District Municipality and the Mtubatuba Local Municipality, KwaZulu Natal. Banzai Environmental (Pty) Ltd, Bloemfontein.

Butler. E. 2022. Palaeontological Desktop Assessment to assess the proposed Altina 120 MW Solar Photovoltaic (PV) Project near Orkney in the Free State,

Butler. E. 2022. Palaeontological Desktop Assessment to assess the proposed SERE Solar Photovoltaic Plant Phase 1A and associated infrastructure in the Western Cape Province.

Butler. E. 2022. Palaeontological Impact Assessment for the proposed development of a 10 MW Solar Photovoltaic (PV) Plant and associated grid connection infrastructure on Portion 9 of the Farm Little Chelsea 10, Eastern Cape Province.

Butler. E. 2022. Palaeontological Desktop Assessment to assess the proposed Dominion 1 Solar Park, located on the Remaining Extent of Portion 18 of Farm 425, near Klerksdorp within the North-West Province.

Butler. E., 2022. Palaeontological Desktop Assessment to assess the proposed Dominion 2 Solar Park, located on the Remaining Extent of Portion 8 of Farm 425, near Klerksdorp within the North-West Province.

Butler. E., 2022. Palaeontological Desktop Assessment to assess the proposed Dominion 3 Solar Park, located on the Remaining Extent of Portion 11 of Farm 425, and Remaining Extent of Portion 31 of Farm 425 near Klerksdorp within the North-West Province

Butler. E., 2022. Palaeontological Impact Assessment to assess the Delta Solar Power Plant on the remaining extent of the farm Kareefontein No. 340, Dr Ruth Segomotsi Mompati District Municipality, Lekwa-Teemane Local Municipality near Bloemhof in the North West Province

Butler. E., 2022. Palaeontological Impact Assessment to assess the Sonneblom Solar Power Plant (SPP) on Portion 1 of the farm Blydschap No. 504 within the Mangaung Metropolitan Municipality, southeast of Bloemfontein in the Free State.

Butler. E., 2022. Palaeontological Impact Assessment for the proposed Naos Solar PV One Project near Viljoenskroon in the Free State.

Butler. E., 2022. Palaeontological Impact Assessment for the proposed Naos Solar PV Two Project near Viljoenskroon in the Free State.

Butler. E., 2022. Palaeontological Impact Assessment for the proposed Naos Solar PV Two Project near Viljoenskroon in the Free State

Butler. E., 2022. Palaeontological Impact Assessment for the Ngwedi Solar Power near Viljoenskroon in the Free State.

Butler. E., 2022. Palaeontological Impact Assessment for the Noko Solar Power Plant and power line near Orkney in the North West.

Butler. E., 2022. Palaeontological Impact Assessment for the Proposed Power Line as part of the Paleso Solar Power Plant near Viljoenskroon in the Free State

Butler. E., 2022. Palaeontological Impact Assessment for the Thakadu Solar Plant which near Viljoenskroon in the Free State



- Butler. E., 2022. Palaeontological Impact Assessment of the Kentani, Braklaagte, Klipfontein, Klipfontein 2, Leliehoek and Sonoblomo PV Facilities located near Dealsville in the Free State Province
- Butler. E., 2022. Palaeontological Impact Assessment for the proposed Harvard 1 Solar Photovoltaic (PV) facility on Portion 5 of Farm Spes Bona no 2355, Mangaung Metropolitan Municipality in the Free State.
- Butler. E., 2022. Palaeontological Impact Assessment for proposed Harvard 2 Solar Photovoltaic (PV) facility on Portion 8 of Farm Spes Bona No 2355, Mangaung Metropolitan Municipality in the Free State.
- Butler. E., 2022. Palaeontological Impact Assessment for the proposed Doornrivier Solar 1, southwest of Matjhabeng (formerly Virginia) in the Free State
- Butler. E., 2022. Palaeontological Desktop Assessment for the proposed Leeuwbosch PV solar photovoltaic (PV) plant and associated infrastructure on Portion 37 of the Farm Leeuwbosch No. 44 near Leeudoringstad within the Maquassi Hills Local Municipality in the Dr Kenneth Kaunda District Municipality in the North West Province.
- Butler. E., 2023. Palaeontological Impact Assessment to assess the Carmel Solar 1 Photovoltaic Solar Energy Facility, near Carletonville, Gauteng Province.
- Butler. E., 2023. Palaeontological Impact Assessment to assess the Carmel Solar 2 Photovoltaic Solar Energy Facility, near Carletonville, Gauteng Province
- Butler. E., 2023. Palaeontological Impact Assessment to assess the Carmel Solar 3 Photovoltaic Solar Energy Facility, near Carletonville, Gauteng Province.
- Butler. E., 2023. Palaeontological Desktop Assessment for the proposed Droogfontein 6 Solar Energy Facility and Battery Energy Storage System, near Kimberley, Northern Cape Province
- Butler. E., 2023. Palaeontological Desktop Assessment to assess the Icarus Solar Power Plant near Klerksdorp, North West Province.
- Butler. E., 2023. Palaeontological Desktop Assessment to assess the proposed Virgo Solar Power Plant near Kathu in the Northern Cape Province
- Butler. E., 2023. Palaeontological Desktop Assessment to assess the proposed Libra Solar Power Plant near Kathu in the Northern Cape Province
- Butler. E., 2023. Palaeontological Impact Assessment to assess the proposed Khwezi Solar Grid Infrastructure near Excelsior, in the Free State Province
- Butler. E., 2023. Palaeontological Impact Assessment to assess the proposed Khwezi Solar Power Plant near Excelsior, in the Free State Province
- Butler. E., 2023. Palaeontological Impact Assessment to assess the proposed Lengana Solar Grid Infrastructure near Excelsior, in the Free State Province
- Butler. E., 2023. Palaeontological Impact Assessment to assess the proposed Lengana Solar Power Plant near Excelsior, in the Free State Province
- Butler. E., 2023. Palaeontological Desktop Assessment for Luckhoff Solar 1 Photovoltaic Solar Energy Facility (SEF) and associated infrastructure near Luckhoff in the Free State