

**NOTIFICATION OF APPLICATION FOR A MAINTENANCE MANAGEMENT PLAN (MMP) FOR THE 132 KV OVERHEAD LINE AND ASSOCIATED PYLON STRUCTURES BETWEEN THE LAINGSBURG AND DROËRIVIER SUBSTATIONS, LOCATED IN THE CENTRAL KAROO DISTRICT MUNICIPALITY, WITHIN THE LAINGSBURG MUNICIPALITY, THE PRINCE ALBERT LOCAL MUNICIPALITY AND THE BEAUFORT WEST MUNICIPALITY, WESTERN CAPE PROVINCE.**

Notice is hereby given in terms of the Environmental Impact Assessment (EIA) Regulations, 2014, under the National Environmental Management Act (No.107 of 1998) (“NEMA”), that Eskom Holdings SOC Limited proposes to apply for a Maintenance and Management Plan (MMP) for the existing 132 kV overhead line and associated pylon structures between the Droërivier and Laingsburg substations. Furthermore, the proposed works trigger Listed Activities in terms of the EIA Regulations (i.e., Listing Notice 1 and 3) of 2014 [General Notice (GN) R982 of 2014]. Hence, an adoption of the MMP is required.

**PROJECT DESCRIPTION**

Zutari (Pty) Ltd was appointed by Eskom Holdings SOC Limited to compile an MMP for the 132 kV overhead line and associated pylon structures between the Droërivier and Laingsburg substations, in the Central Karoo District Municipality of the Western Cape Province. This was prompted by the collapse of four lattice towers on the 132 kV double-circuit Leeu Gamka – Luttig line due to strong winds in the Leeu Gamka area. The proposed maintenance project will allow Eskom to undertake maintenance activities as needed along the 200 km distribution line, therefore ensuring that the distribution line is functioning optimally, reducing the risk of outages or failures that could disrupt the power supply.

**LOCATION**

The project is located between the Laingsburg (in Laingsburg) and Droërivier (near Beaufort West) substations, within the Prince Albert Local Municipality and the Beaufort West Municipality in the Western Cape Province (refer to **Figure 1** below).

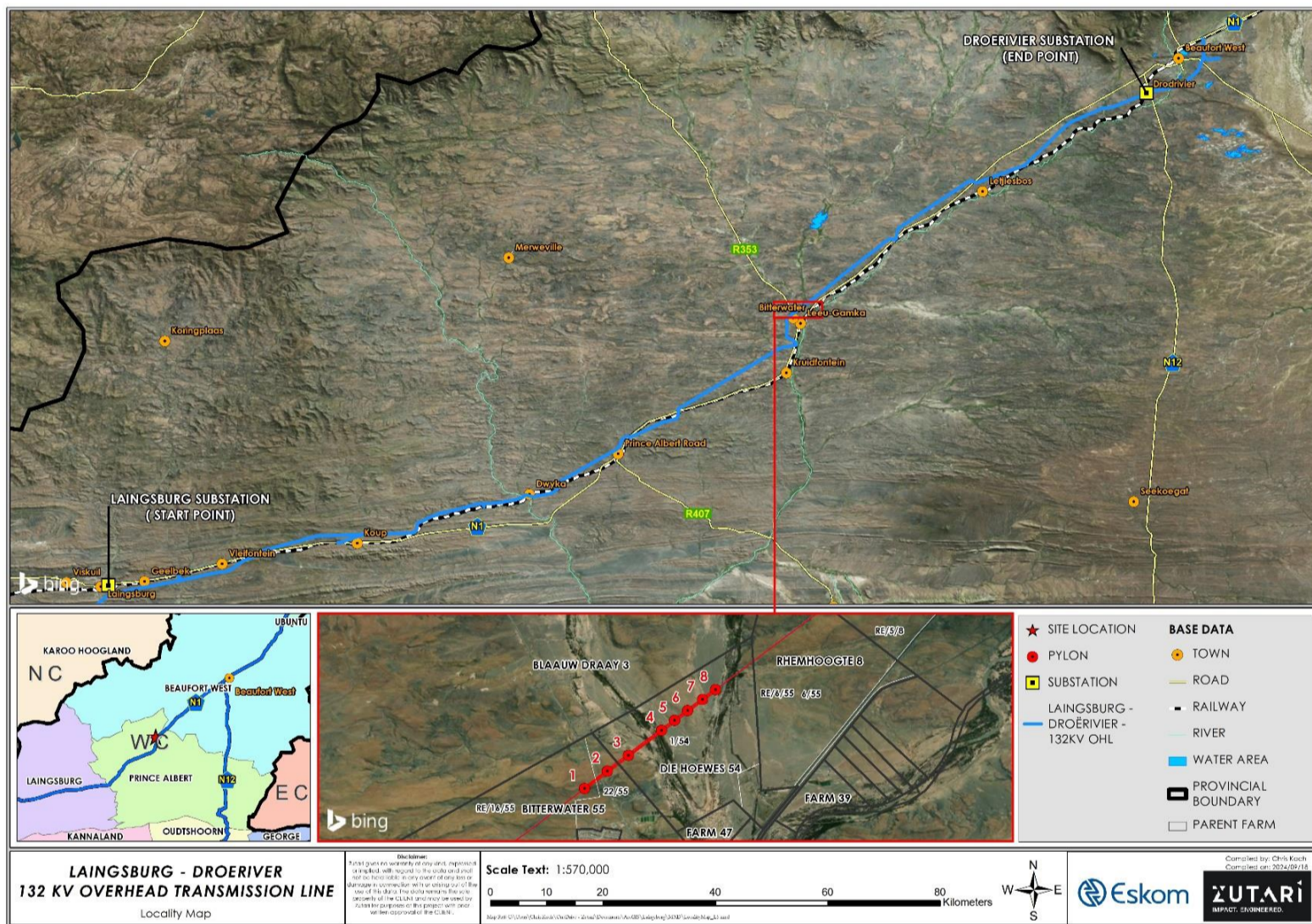


Figure 1: Project Locality Map

**LISTING NOTICES TRIGGERED**

Legislation	Activity
<b>Basic Assessment Activity(ies) as set out in Listing Notice 1 (GN R983 of 2014) of the EIA Regulations of 2014</b>	
LN 1 Act 12	The development of— (ii) infrastructure or structures with a physical footprint of 100 square metres or more; where such development occurs — (c) if no development setback exists, within 32 metres of a watercourse, measured from the edge of a watercourse.
LN 1 Act 19	The infilling or depositing of any material of more than 10 cubic metres into, or the dredging, excavation, removal or moving of soil, sand, shells, shell grit, pebbles or rock of more than 10 cubic metres from a watercourse; but excluding where such infilling, depositing, dredging, excavation, removal or moving.
<b>Basic Assessment Activity(ies) as set out in Listing Notice 3 (GN. R985 of 2014) of the EIA Regulations of 2014</b>	
LN 3 Act 12	The clearance of an area of 300 square metres or more of indigenous vegetation except where such clearance of indigenous vegetation is required for maintenance purposes undertaken in accordance with a maintenance management plan. Western Cape (ii) Within critical biodiversity areas identified in bioregional plans.
LN 3 Act 14	The development of — (ii) infrastructure or structures with a physical footprint of 10 square metres or more; where such development occurs — (c) if no development setback has been adopted, within 32 metres of a watercourse, measured from the edge of a watercourse; excluding the development of infrastructure or structures within existing ports or harbours that will not increase the development footprint of the port or harbour. i. Western Cape i. Outside urban areas: (bb) National Protected Area Expansion Strategy Focus areas; (ff) Critical biodiversity areas or ecosystem service areas as identified in systematic biodiversity plans adopted by the competent authority or in bioregional plans.

**OPPORTUNITY TO PARTICIPATE**

For more information, to register as an Interested and Affected Party (I&AP) or to submit comments, please contact us via email, post, or phone:

✉	PPP@zutari.com
☎	+27 12 427 2072
✉	PO Box 494, Cape Town, 8000, South Africa
<b>PUBLIC COMMENT PERIOD: FRIDAY, 04 OCTOBER 2024 TO FRIDAY, 08 NOVEMBER 2024</b> The MMP is available for download at <a href="https://www.zutari.com/EskomMMP-public-participation">https://www.zutari.com/EskomMMP-public-participation</a>	